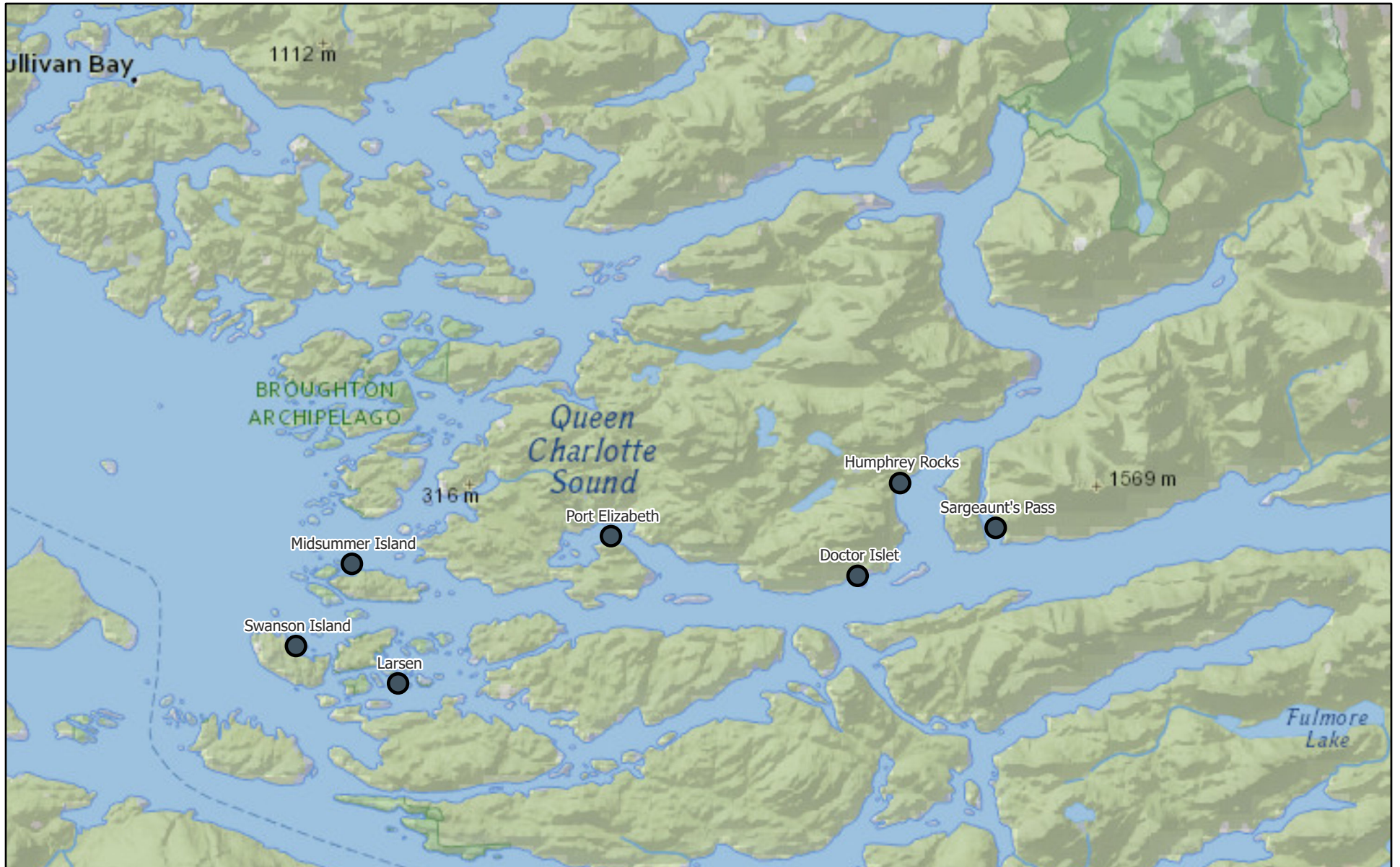


Monthly Sea Lice Monitoring March 2024 - Broughton

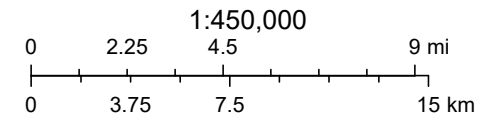


4/10/2024

Monthly Sealice External

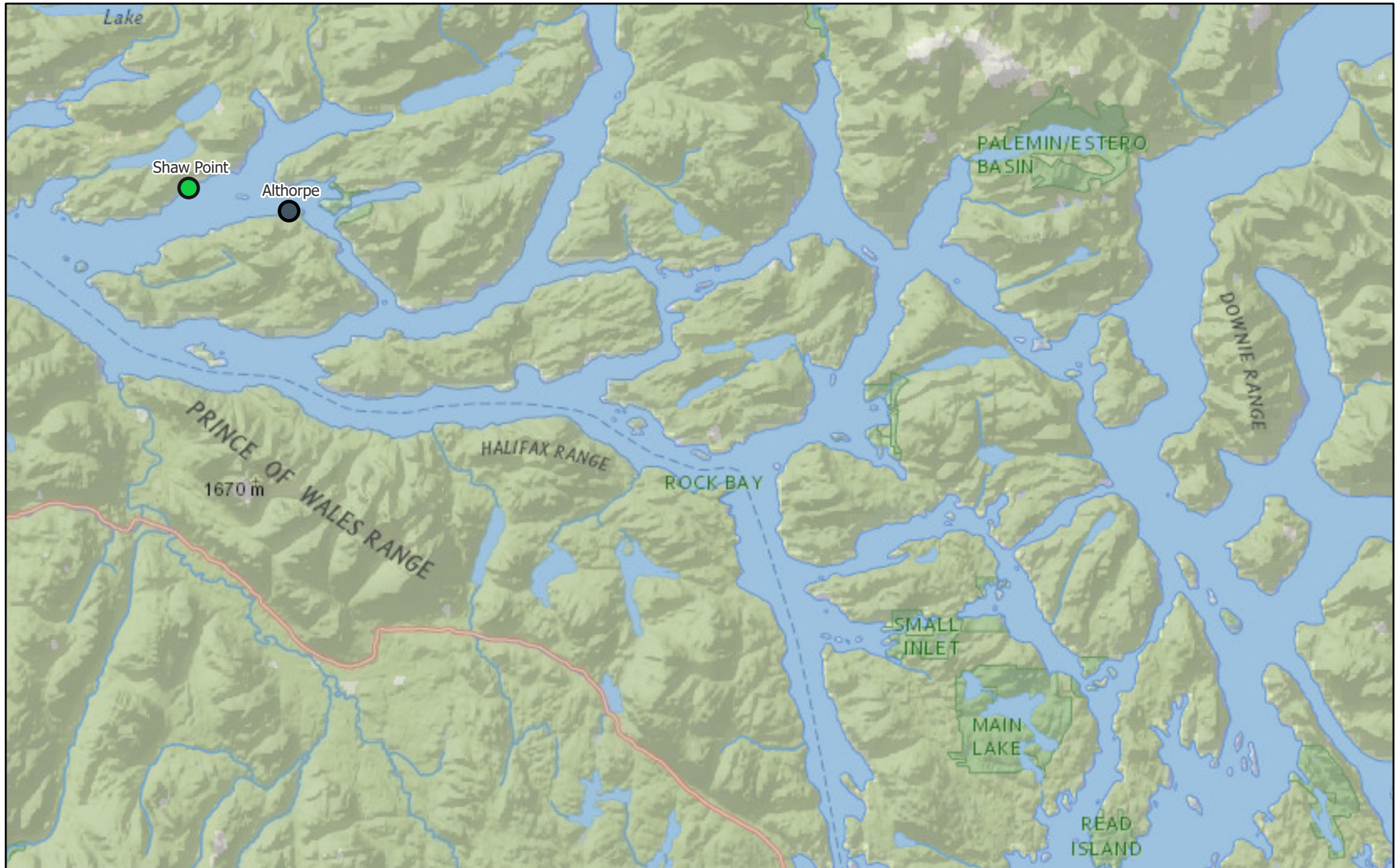
NatGeo_World_Map

● Empty Mowi Sites



National Geographic, Esri, Garmin, HERE, UNEP-WCMC, USGS, NASA, ESA, METI, NRCAN, GEBCO, NOAA, increment P Corp.

Monthly Sea Lice Monitoring March 2024 - Campbell River



4/10/2024

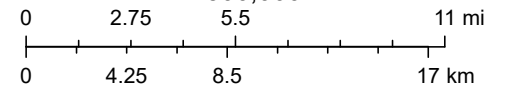
Monthly Sealice External

● ≤ 3.0 motile per fish

● Empty Mowi Sites

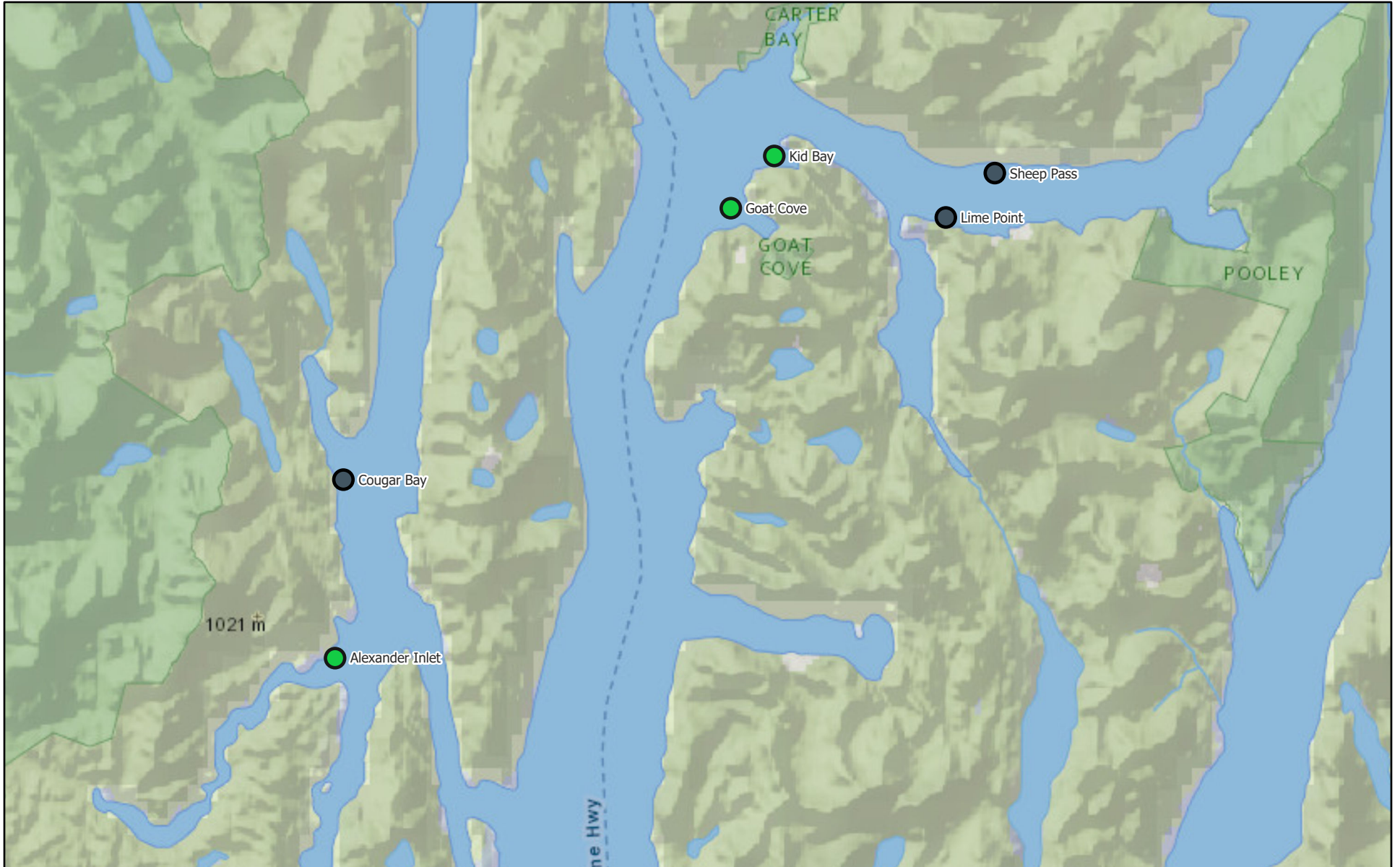
NatGeo_World_Map

1:500,000



National Geographic, Esri, Garmin, HERE, UNEP-WCMC, USGS, NASA, ESA, METI, NRCAN, GEBCO, NOAA, increment P Corp.

Monthly Sea Lice Monitoring March 2024 - Klemtu



4/10/2024

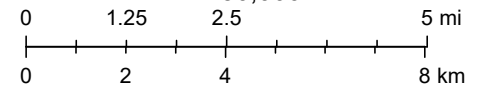
Monthly Sealice External

● ≤ 3.0 motile per fish

● Empty Mowi Sites

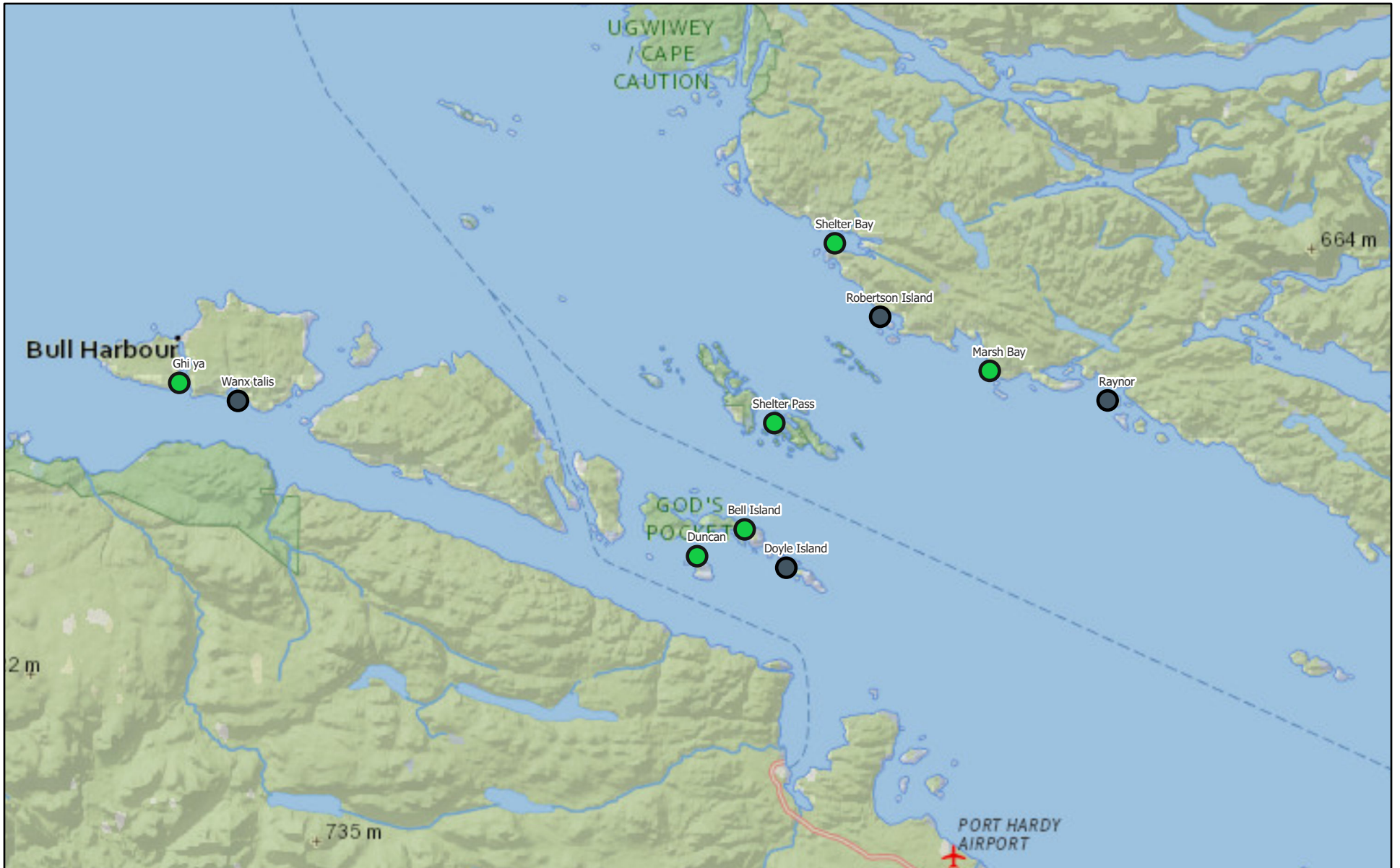
NatGeo_World_Map

1:250,000



National Geographic, Esri, Garmin, HERE, UNEP-WCMC, USGS, NASA, ESA, METI, NRCAN, GEBCO, NOAA, increment P Corp.

Monthly Sea Lice Monitoring March 2024 - Port Hardy



4/10/2024

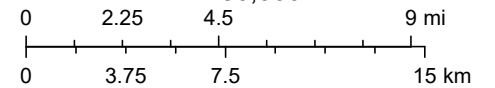
Monthly Sealice External

● ≤ 3.0 motile per fish

● Empty Mowi Sites

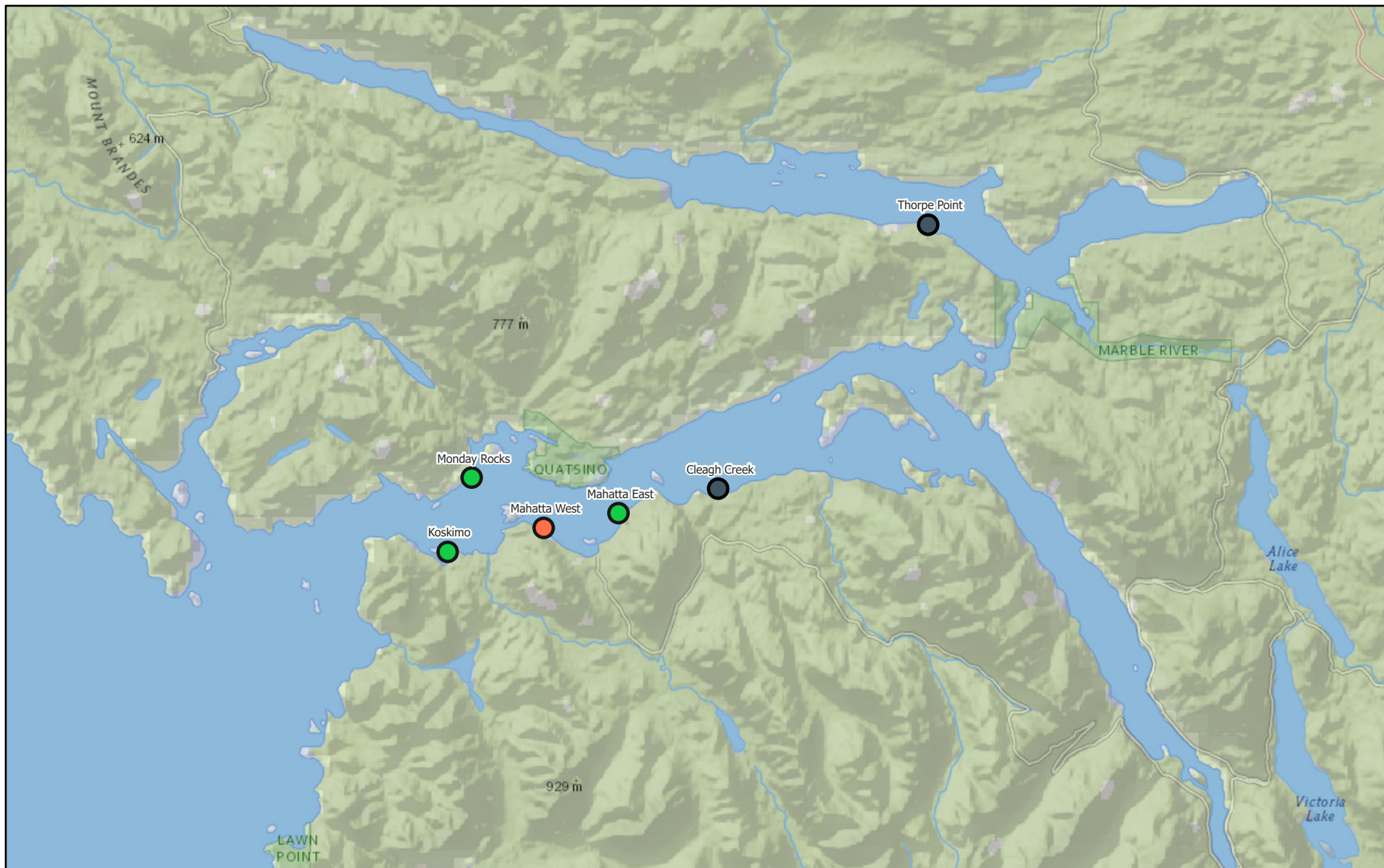
NatGeo_World_Map

1:450,000



National Geographic, Esri, Garmin, HERE, UNEP-WCMC, USGS, NASA, ESA, METI, NRCAN, GEBCO, NOAA, increment P Corp.

Monthly Sea Lice Monitoring March 2024 - Quatsino



4/10/2024

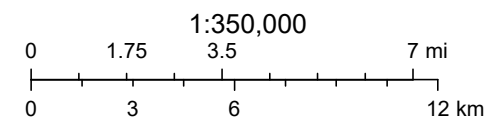
Monthly Sealice External

● ≤ 3.0 motile per fish

● > 3.0 motile per fish

● Empty Mowi Sites

NatGeo_World_Map



National Geographic, Esri, Garmin, HERE, UNEP-WCMC, USGS, NASA, ESA, METI, NRCAN, GEBCO, NOAA, increment P Corp.

Area	Site	Month	Year	Avg Motile	Note	EMB Start	H202 Start	Mechanical delousing Start	Freshwater Start
Broughton	Doctor Islet	3	2024	0					
Broughton	Humphrey Rocks	3	2024	0					
Broughton	Larsen			0					
Broughton	Midsummer Island	3	2024	0					
Broughton	Port Elizabeth	3	2024	0					
Broughton	Sargeaunt's Pass	3	2024	0					
Broughton	Swanson Island	3	2024	0					
Campbell River	Althorpe	3	2024	0					
Campbell River	Shaw Point	3	2024	1.67	Freshwater planned for April	21-Aug-23		9-Jan-24	26-Jan-24
Klemtu	Alexander Inlet	3	2024	1.35	Freshwater planned for April				
Klemtu	Cougar Bay	3	2024	0					
Klemtu	Goat Cove	3	2024	1.62	Freshwater planned for April	29-Aug-23		26-Feb-24	5-Jan-24
Klemtu	Kid Bay	3	2024	0.57		22-Dec-23	6-Jan-23	29-Oct-23	28-Jul-23
Klemtu	Lime Point	3	2024	0					
Klemtu	Sheep Pass	3	2024	0	smolt entry starting March 29, 2024				
Port Hardy	Bell Island	3	2024	0.83	Fish transferred to Duncan and site empty on March 18, 2024. New smolts entered starting on March 28, 2024				
Port Hardy	Doyle Island	3	2024	0					
Port Hardy	Duncan	3	2024	0.18	Freshwater completed on fish moved from Bell Island				29-Feb-24
Port Hardy	Ghi ya	3	2024	0.66					
Port Hardy	Marsh Bay	3	2024	0.75		9-Jan-24			11-Nov-23
Port Hardy	Raynor	3	2024	0					
Port Hardy	Robertson Island	3	2024	0					
Port Hardy	Shelter Bay	3	2024	0.44					
Port Hardy	Shelter Pass	3	2024	0.67		3-Nov-23			6-Oct-23
Port Hardy	Wanx talis	3	2024	0					
Quatsino	Cleagh Creek	3	2024	0					
Quatsino	Koskimo	3	2024	2.45	harvesting in April	13-Jul-23			15-Feb-24
Quatsino	Mahatta East	3	2024	0.18	Freshwater treatment completed and harvesting ongoing	11-Jul-23			28-Feb-24
Quatsino	Mahatta West	3	2024	7.95	Freshwater treatment ongoing	12-Jul-23			26-Mar-24
Quatsino	Monday Rocks	3	2024	1.11		30-Jan-24			
Quatsino	Thorpe Point	3	2024	0					