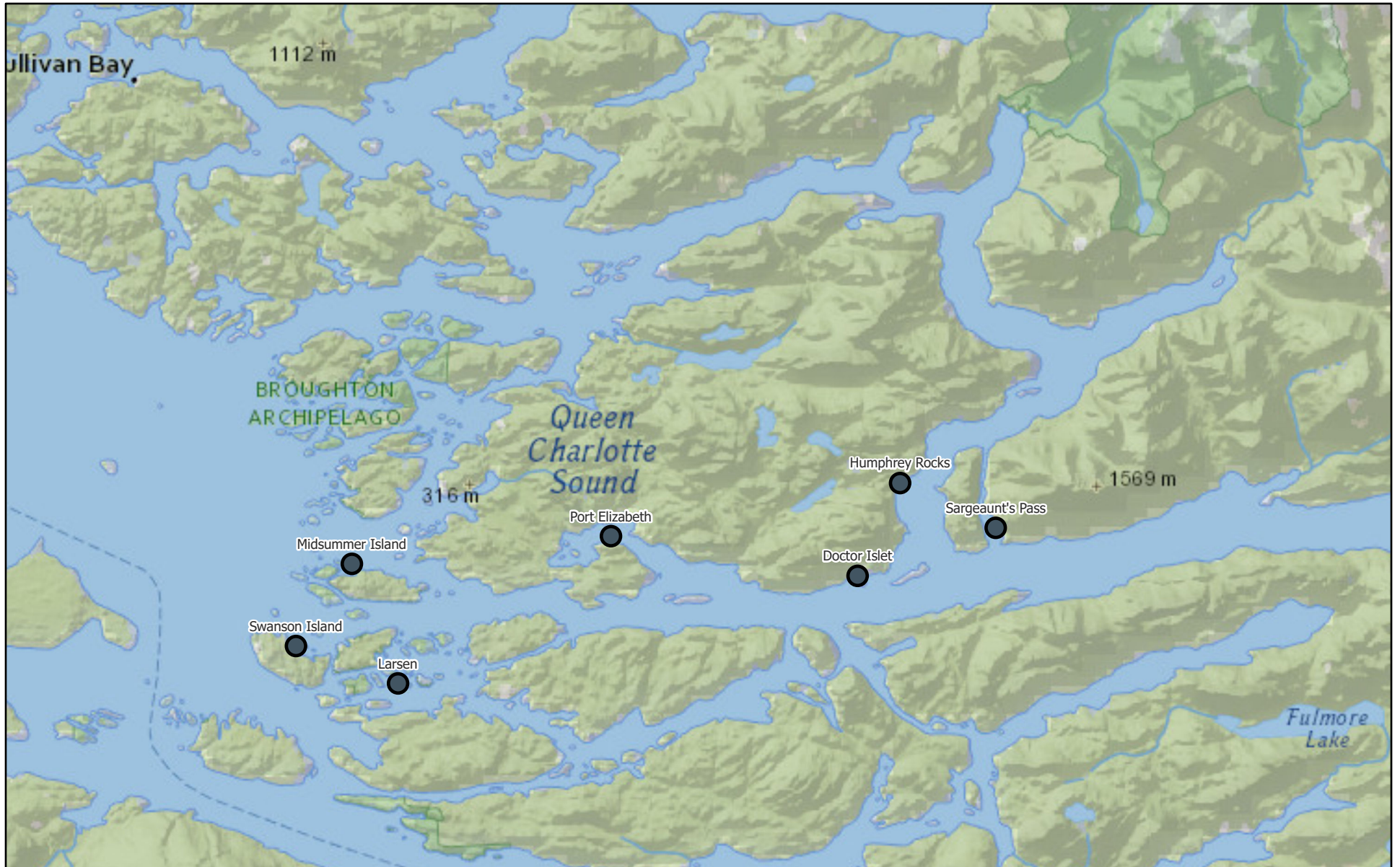


# Monthly Sea Lice Monitoring April 2024 - Broughton

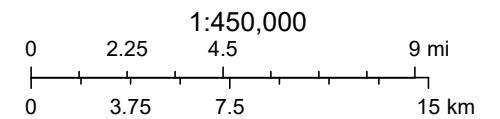


5/2/2024

Monthly Sealice External

NatGeo\_World\_Map

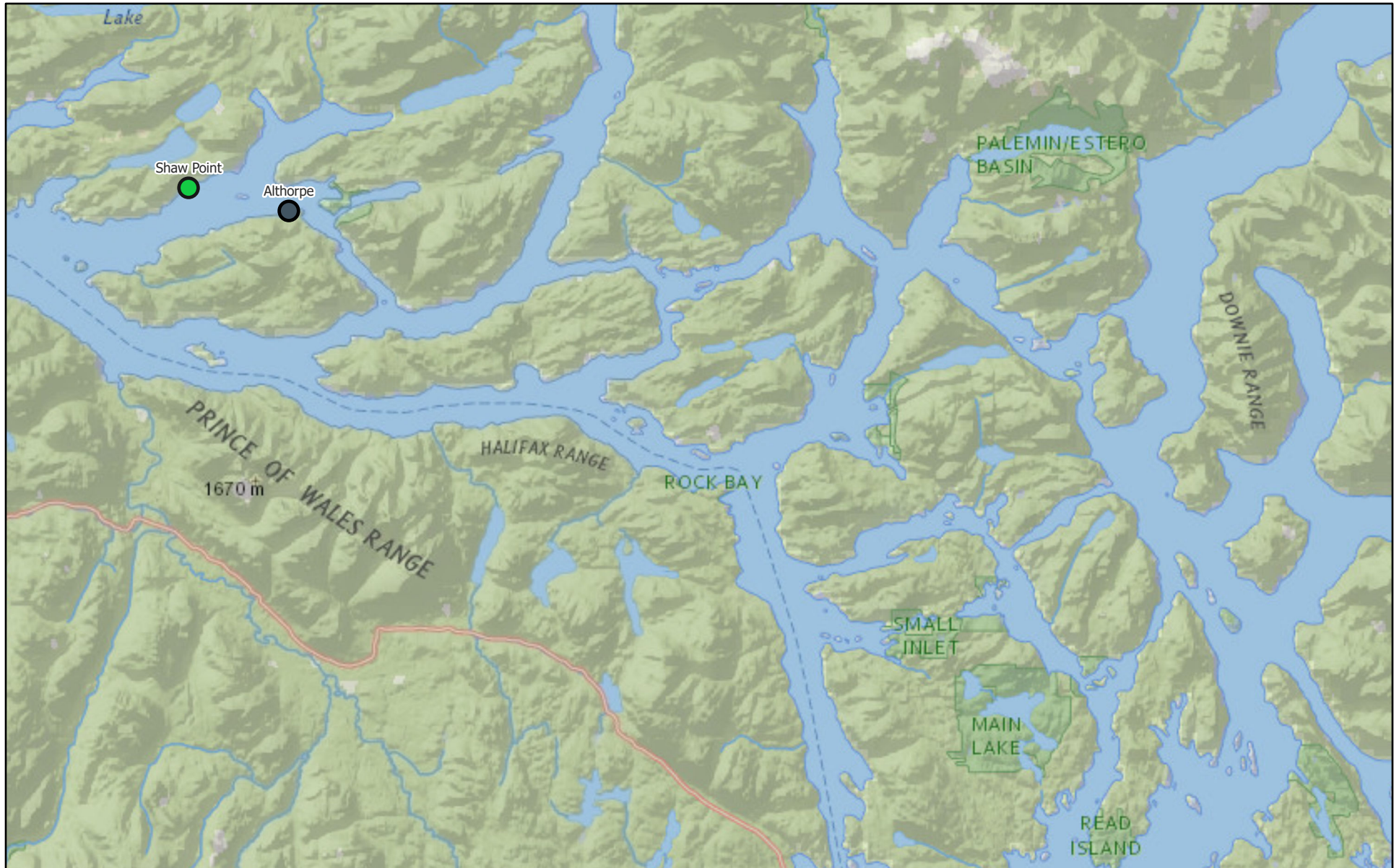
● Empty Mowi Sites



National Geographic, Esri, Garmin, HERE, UNEP-WCMC, USGS, NASA, ESA, METI, NRCAN, GEBCO, NOAA, increment P Corp.



# Monthly Sea Lice Monitoring April 2024 - Campbell River



5/2/2024

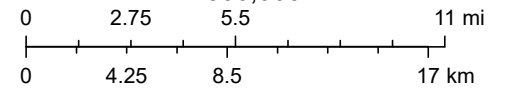
Monthly Sealice External

●  $\leq 3.0$  motile per fish

● Empty Mowi Sites

NatGeo\_World\_Map

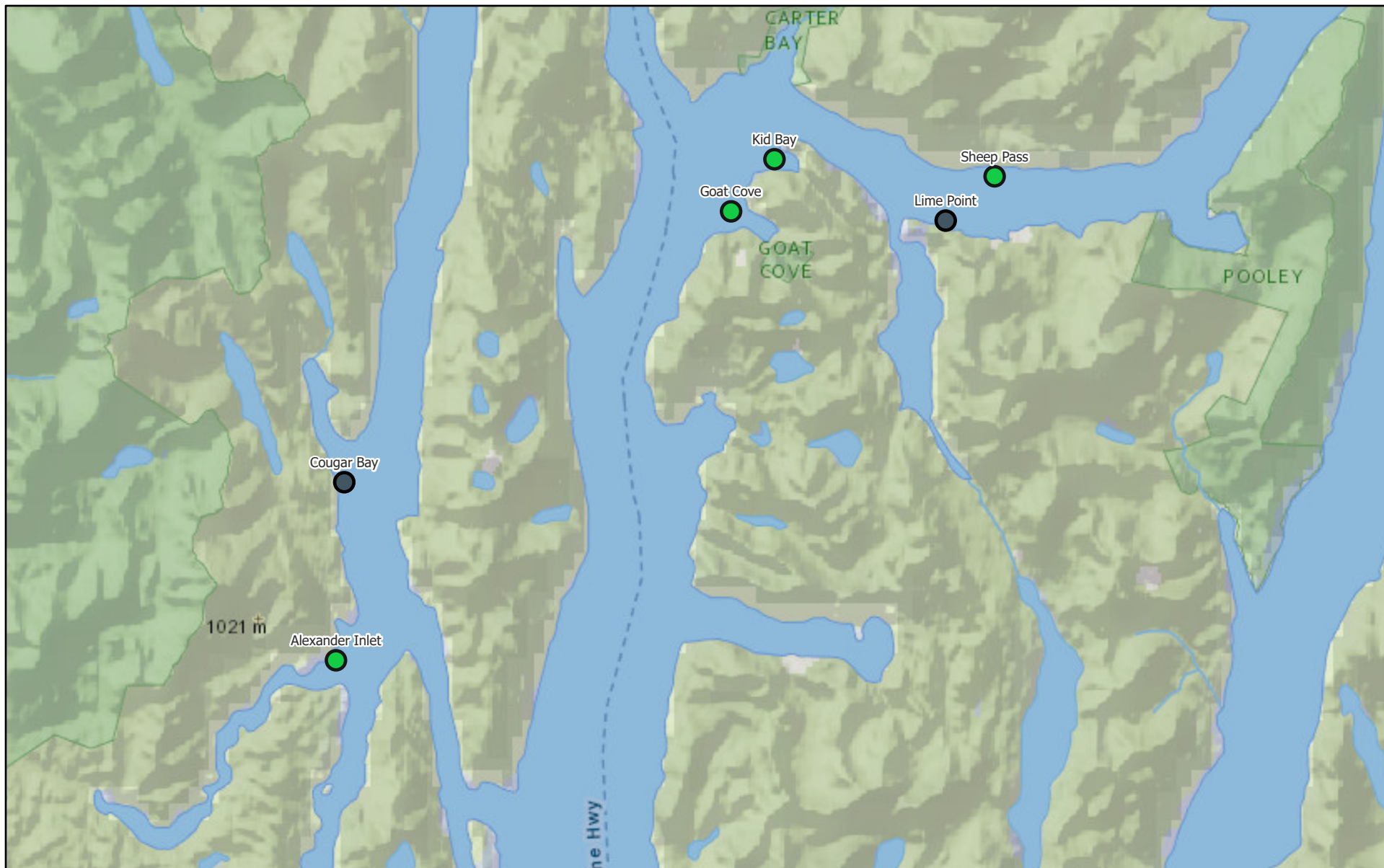
1:500,000



National Geographic, Esri, Garmin, HERE, UNEP-WCMC, USGS, NASA, ESA, METI, NRCAN, GEBCO, NOAA, increment P Corp.



# Monthly Sea Lice Monitoring April 2024 - Klemtu



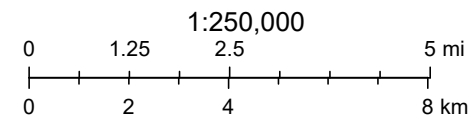
5/2/2024

Monthly Sealice External

●  $\leq 3.0$  motile per fish

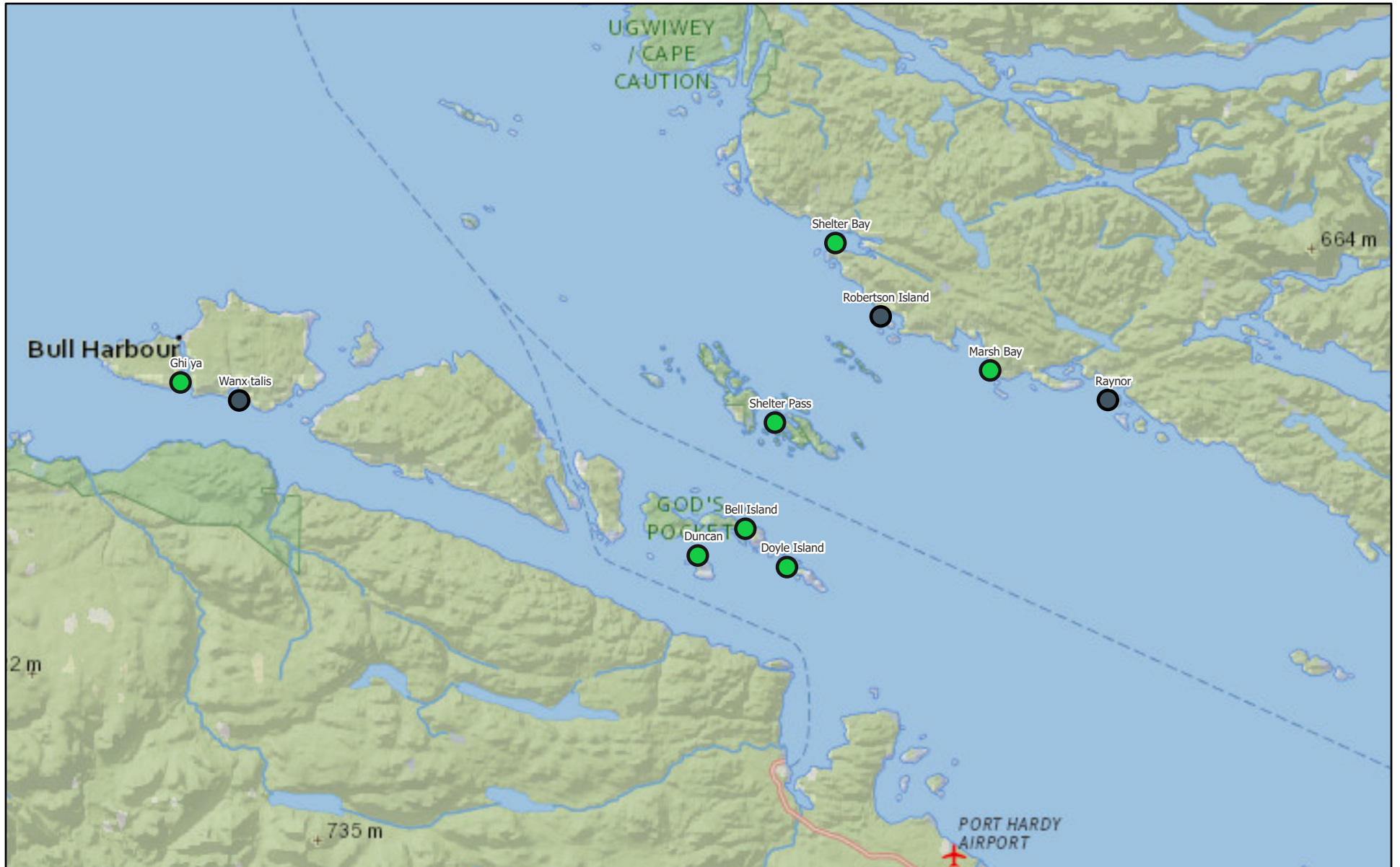
● Empty Mowi Sites

NatGeo\_World\_Map



National Geographic, Esri, Garmin, HERE, UNEP-WCMC, USGS, NASA, ESA, METI, NRCAN, GEBCO, NOAA, increment P Corp.

# Monthly Sea Lice Monitoring April 2024 - Port Hardy



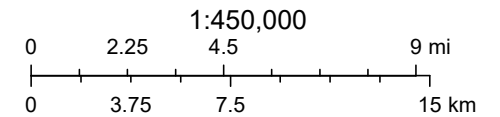
5/2/2024

Monthly Sealice External

● ≤ 3.0 motile per fish

● Empty Mowi Sites

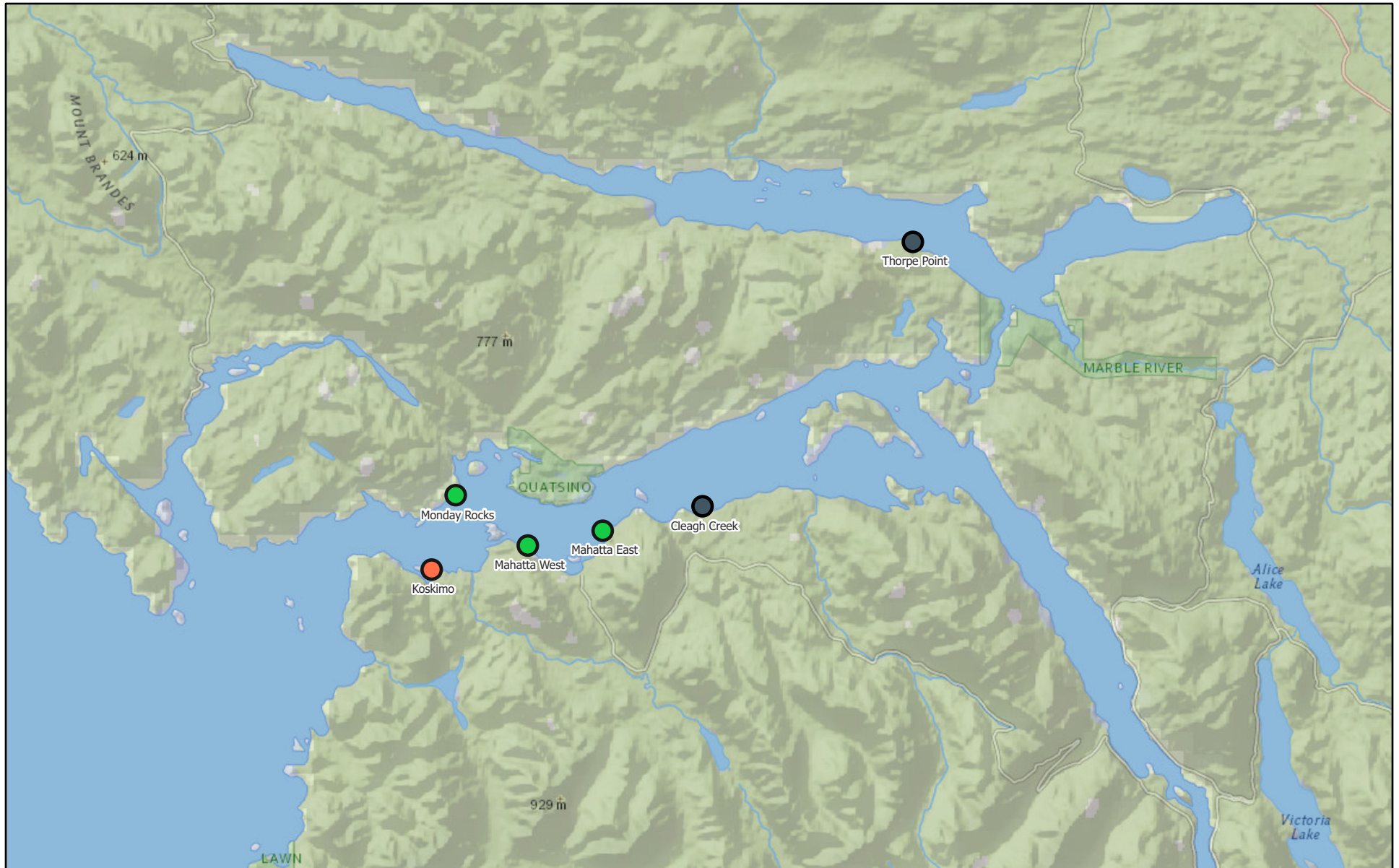
NatGeo\_World\_Map



National Geographic, Esri, Garmin, HERE, UNEP-WCMC, USGS, NASA, ESA, METI, NRCAN, GEBCO, NOAA, increment P Corp.



# Monthly Sea Lice Monitoring April 2024 - Quatsino



5/2/2024

Monthly Sealice External

● ≤ 3.0 motile per fish

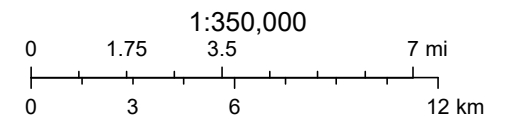


> 3.0 motile per fish



Empty Mowi Sites

NatGeo\_World\_Map



National Geographic, Esri, Garmin, HERE, UNEP-WCMC, USGS, NASA, ESA, METI, NRCAN, GEBCO, NOAA, increment P Corp.

Area	Site	Month	Year	Avg Motile	Note	EMB Start	H202 Start	Mechanical delousing Start	Freshwater Start
Broughton	Doctor Islet	4	2024						
Broughton	Humphrey Rocks	4	2024						
Broughton	Larsen								
Broughton	Midsummer Island	4	2024						
Broughton	Port Elizabeth	4	2024						
Broughton	Sargeaunt's Pass	4	2024						
Broughton	Swanson Island	4	2024						
Campbell River	Althorpe	4	2024						
Campbell River	Shaw Point	4	2024	1.43	Freshwater treatment completed	21-Aug-23		9-Jan-24	13-Apr-24
Klemtu	Alexander Inlet	4	2024	1.57	Freshwater planned for early May				
Klemtu	Cougar Bay	4	2024						
Klemtu	Goat Cove	4	2024	2.06	Freshwater treatment completed	29-Aug-23		26-Feb-24	20-Apr-24
Klemtu	Kid Bay	4	2024	1.25		22-Dec-23	6-Jan-23	29-Oct-23	28-Jul-23
Klemtu	Lime Point	4	2024						
Klemtu	Sheep Pass	4	2024	0					
Port Hardy	Bell Island	4	2024	0.05					
Port Hardy	Doyle Island	4	2024	0.03	Smolt entry starting April 4				
Port Hardy	Duncan	4	2024	0.66					29-Feb-24
Port Hardy	Ghi ya	4	2024	0.58					
Port Hardy	Marsh Bay	4	2024	0.52		9-Jan-24			11-Nov-23
Port Hardy	Raynor	4	2024						
Port Hardy	Robertson Island	4	2024						
Port Hardy	Shelter Bay	4	2024	0.4					
Port Hardy	Shelter Pass	4	2024	1.13		3-Nov-23			6-Oct-23
Port Hardy	Wanx talis	4	2024						
Quatsino	Cleagh Creek	4	2024						
Quatsino	Koskimo	4	2024	7.13	Fallow on April 23, 2024	13-Jul-23			15-Feb-24
Quatsino	Mahatta East	4	2024	1.43	Harvesting and will be empty first week of May	11-Jul-23			28-Feb-24
Quatsino	Mahatta West	4	2024	0.49	Freshwater treatment completed	12-Jul-23			26-Mar-24
Quatsino	Monday Rocks	4	2024	0.99		30-Jan-24			
Quatsino	Thorpe Point	4	2024						