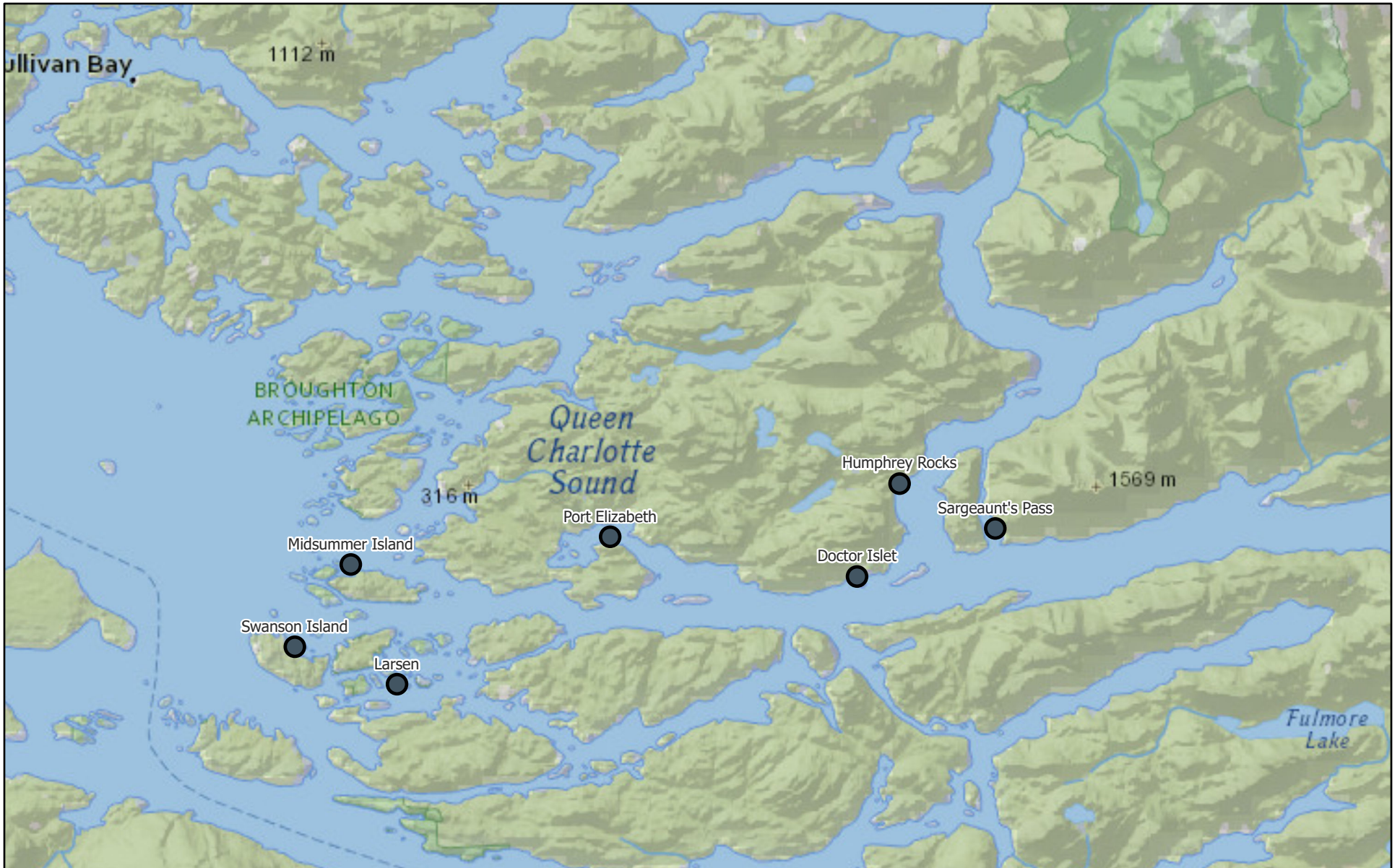


Monthly Sea Lice Monitoring May 2024 - Broughton

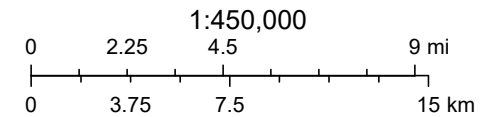


6/11/2024

Monthly Sealice External

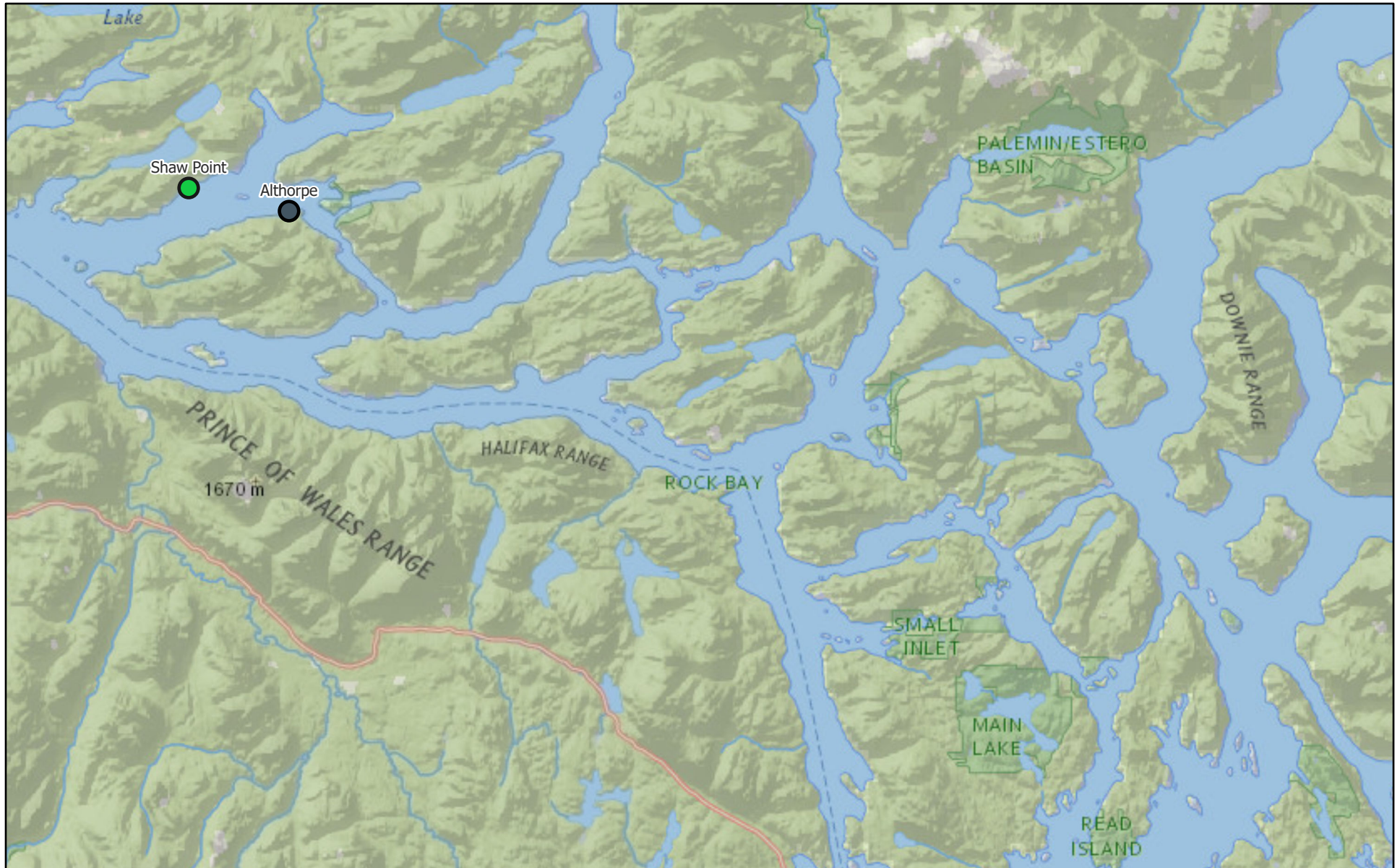
NatGeo_World_Map

● Empty Mowi Sites



National Geographic, Esri, Garmin, HERE, UNEP-WCMC, USGS, NASA, ESA, METI, NRCAN, GEBCO, NOAA, increment P Corp.

Monthly Sea Lice Monitoring May 2024 - Campbell River



6/11/2024

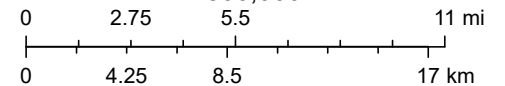
Monthly Sealice External

● ≤ 3.0 motile per fish

● Empty Mowi Sites

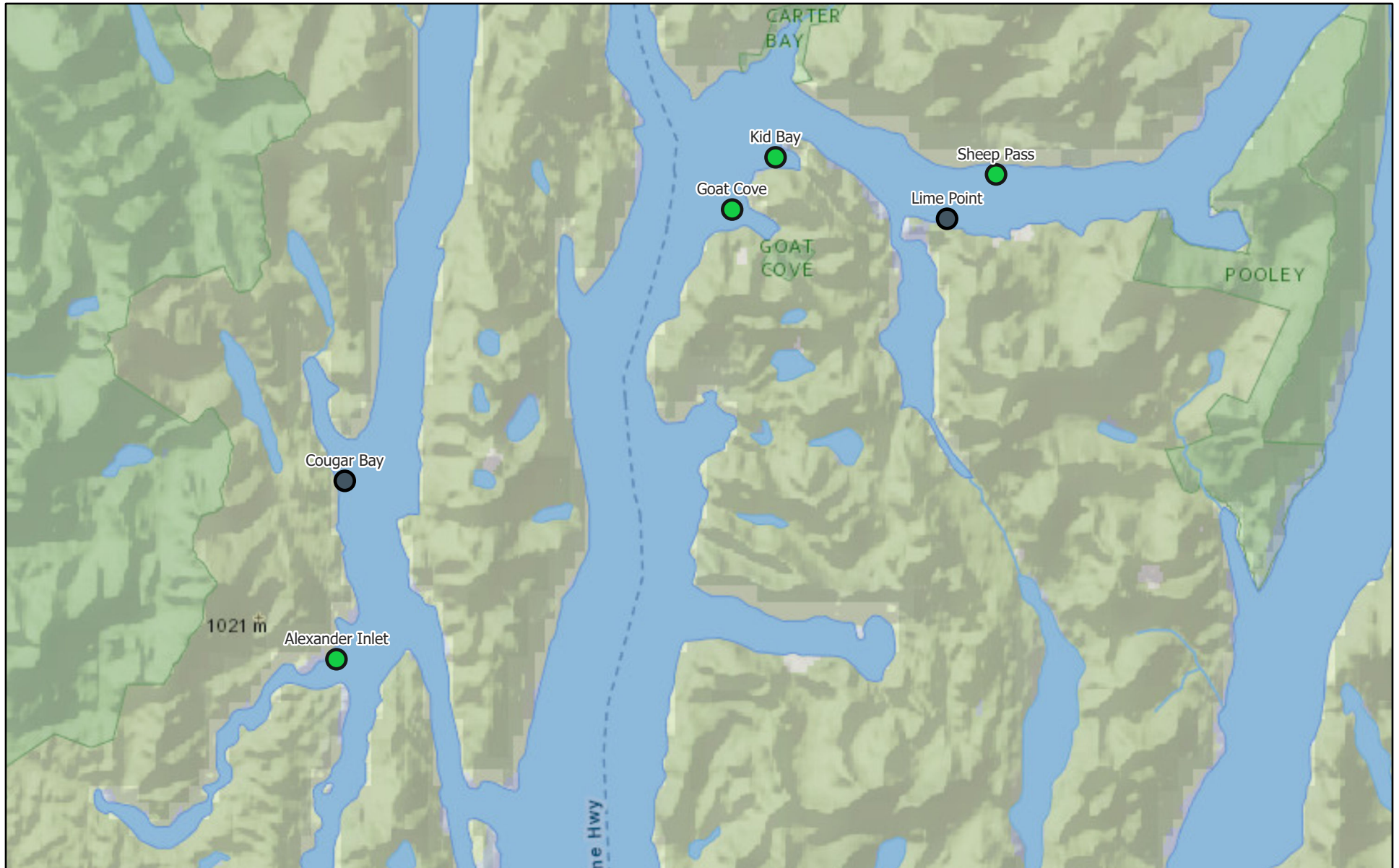
NatGeo_World_Map

1:500,000



National Geographic, Esri, Garmin, HERE, UNEP-WCMC, USGS, NASA, ESA, METI, NRCAN, GEBCO, NOAA, increment P Corp.

Monthly Sea Lice Monitoring May 2024 - Klemtu



6/11/2024

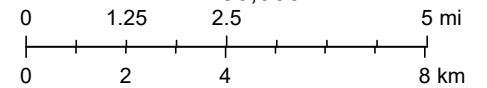
Monthly Sealice External

● ≤ 3.0 motile per fish

● Empty Mowi Sites

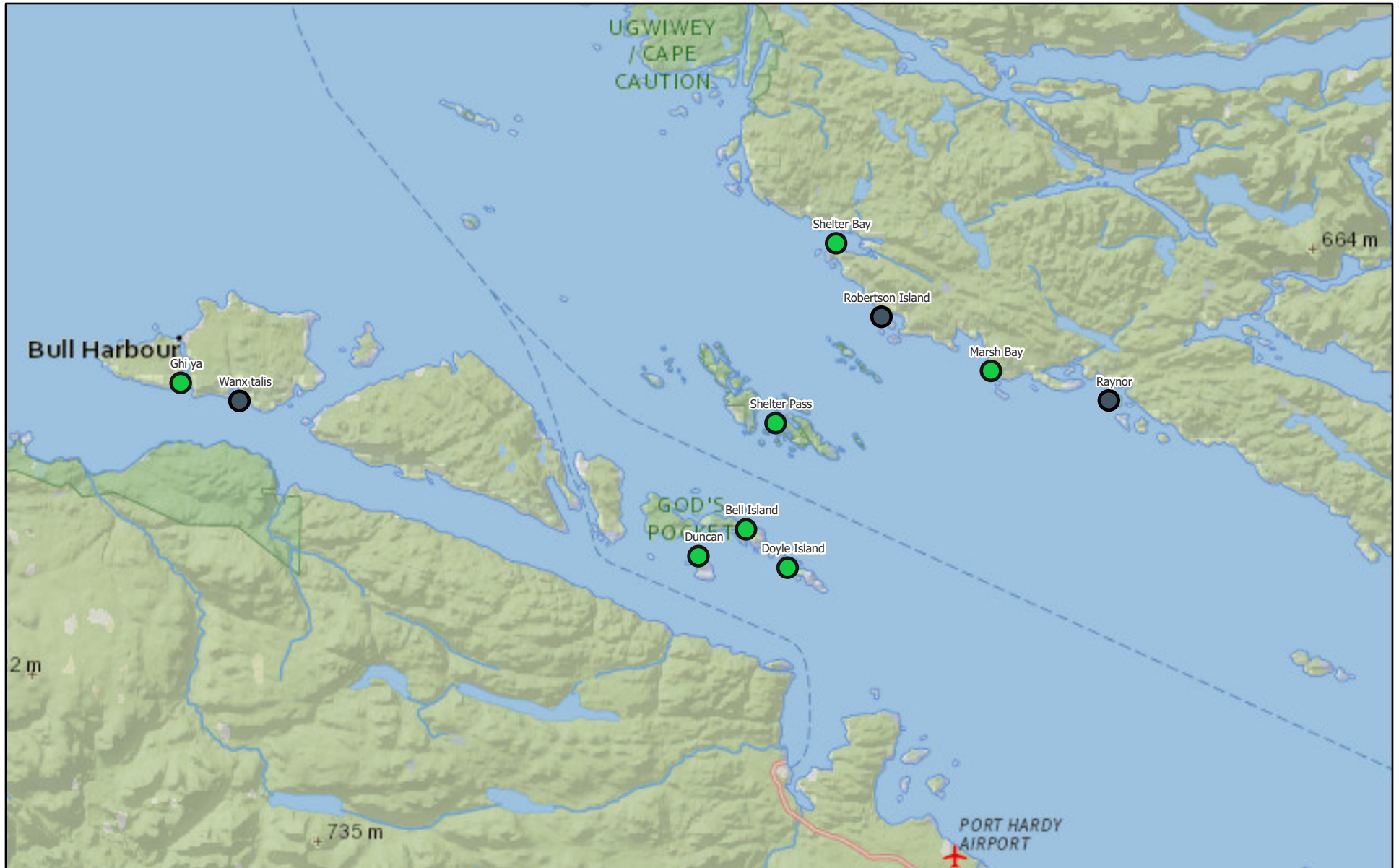
NatGeo_World_Map

1:250,000



National Geographic, Esri, Garmin, HERE, UNEP-WCMC, USGS, NASA, ESA, METI, NRCAN, GEBCO, NOAA, increment P Corp.

Monthly Sea Lice Monitoring May 2024 - Port Hardy



6/11/2024

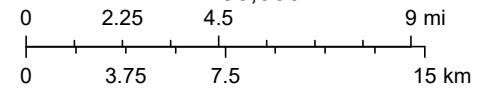
Monthly Sealice External

● ≤ 3.0 motile per fish

● Empty Mowi Sites

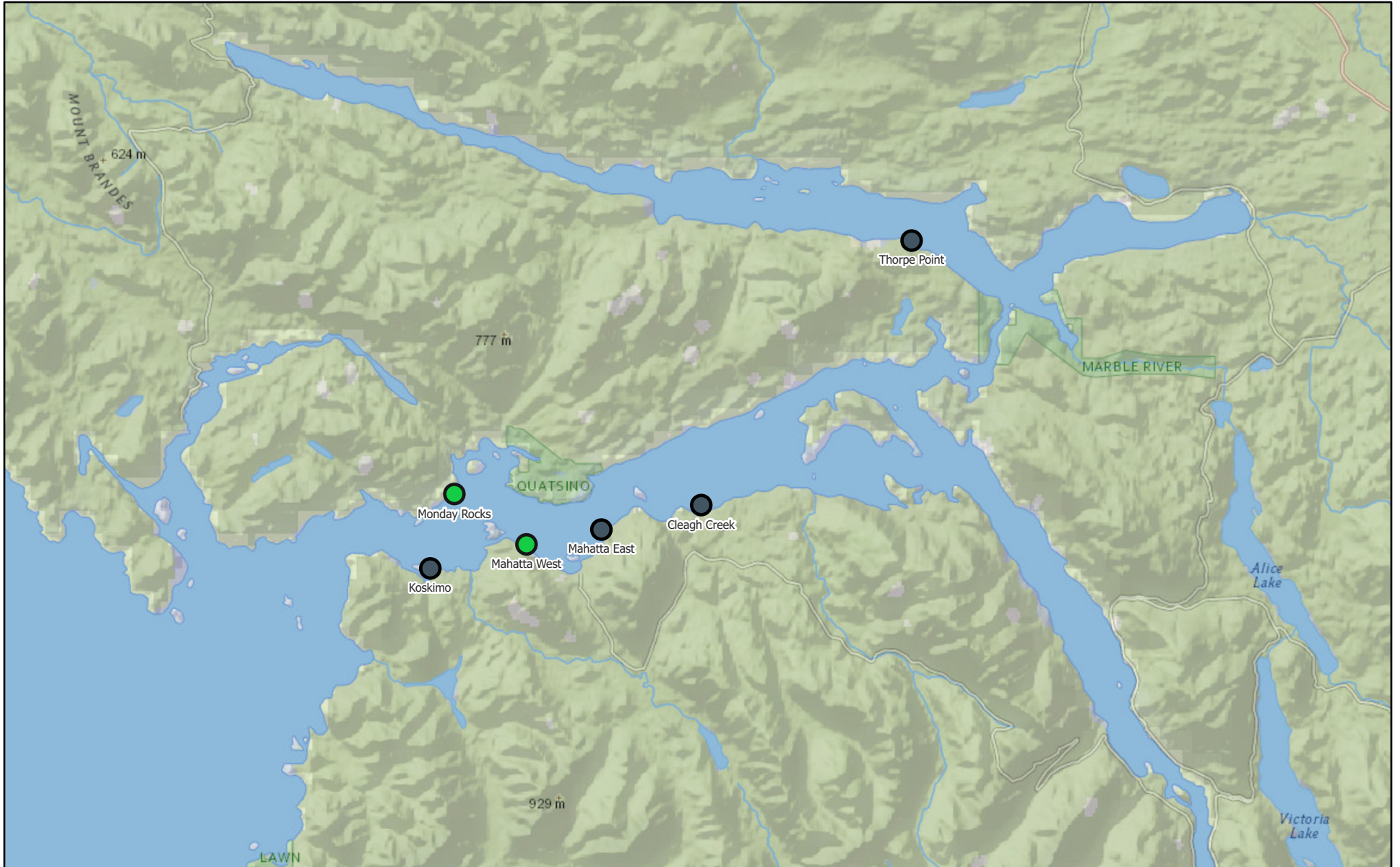
NatGeo_World_Map

1:450,000



National Geographic, Esri, Garmin, HERE, UNEP-WCMC, USGS, NASA, ESA, METI, NRCAN, GEBCO, NOAA, increment P Corp.

Monthly Sea Lice Monitoring May 2024 - Quatsino



6/11/2024

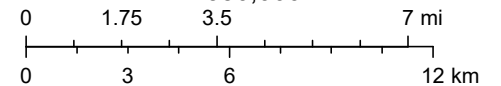
Monthly Sealice External

● ≤ 3.0 motile per fish

● Empty Mowi Sites

NatGeo_World_Map

1:350,000



National Geographic, Esri, Garmin, HERE, UNEP-WCMC, USGS, NASA, ESA, METI, NRCAN, GEBCO, NOAA, increment P Corp.

| Area | Site | Month | Year | Avg Motile | Note | EMB Start | H2O2 Start | Mechanical delousing Start | Freshwater Start |
|----------------|------------------|-------|------|------------|-------------------------|-----------|------------|----------------------------|------------------|
| Broughton | Doctor Islet | 5 | 2024 | | | | | | |
| Broughton | Humphrey Rocks | 5 | 2024 | | | | | | |
| Broughton | Larsen | 5 | 2024 | | | | | | |
| Broughton | Midsummer Island | 5 | 2024 | | | | | | |
| Broughton | Port Elizabeth | 5 | 2024 | | | | | | |
| Broughton | Sargeaunt's Pass | 5 | 2024 | | | | | | |
| Broughton | Swanson Island | 5 | 2024 | | | | | | |
| Campbell River | Althorpe | 5 | 2024 | | | | | | |
| Campbell River | Shaw Point | 5 | 2024 | 0.97 | | 21-Aug-23 | | 9-Jan-24 | 13-Apr-24 |
| Klemtu | Alexander Inlet | 5 | 2024 | 0.4 | FW treatment completed | | | | 4-May-24 |
| Klemtu | Cougar Bay | 5 | 2024 | | | | | | |
| Klemtu | Goat Cove | 5 | 2024 | 0.54 | SLICE treatment pending | 29-Aug-23 | | 26-Feb-24 | 20-Apr-24 |
| Klemtu | Kid Bay | 5 | 2024 | 1.57 | Harvesting | 22-Dec-23 | 6-Jan-23 | 29-Oct-23 | 28-Jul-23 |
| Klemtu | Lime Point | 5 | 2024 | | | | | | |
| Klemtu | Sheep Pass | 5 | 2024 | 0.29 | | | | | |
| Port Hardy | Bell Island | 5 | 2024 | 0.22 | | | | | |
| Port Hardy | Doyle Island | 5 | 2024 | 0.08 | | | | | |
| Port Hardy | Duncan | 5 | 2024 | 1.46 | FW treatment pending | | | | 29-Feb-24 |
| Port Hardy | Ghi ya | 5 | 2024 | 0.39 | | | | | |
| Port Hardy | Marsh Bay | 5 | 2024 | 1.15 | FW treatment pending | 9-Jan-24 | | | 11-Nov-23 |
| Port Hardy | Raynor | 5 | 2024 | | | | | | |
| Port Hardy | Robertson Island | 5 | 2024 | | | | | | |
| Port Hardy | Shelter Bay | 5 | 2024 | 0.41 | | | | | |
| Port Hardy | Shelter Pass | 5 | 2024 | 1.43 | FW treatment pending | 3-Nov-23 | | | 6-Oct-23 |
| Port Hardy | Wanx talis | 5 | 2024 | | | | | | |
| Quatsino | Cleagh Creek | 5 | 2024 | | | | | | |
| Quatsino | Koskimo | 5 | 2024 | | | | | | |
| Quatsino | Mahatta East | 5 | 2024 | | Fallow on May 5, 2024 | 11-Jul-23 | | | 28-Feb-24 |
| Quatsino | Mahatta West | 5 | 2024 | 1.59 | Harvesting | 12-Jul-23 | | | 26-Mar-24 |
| Quatsino | Monday Rocks | 5 | 2024 | 1.27 | | 30-Jan-24 | | | |
| Quatsino | Thorpe Point | 5 | 2024 | | | | | | |