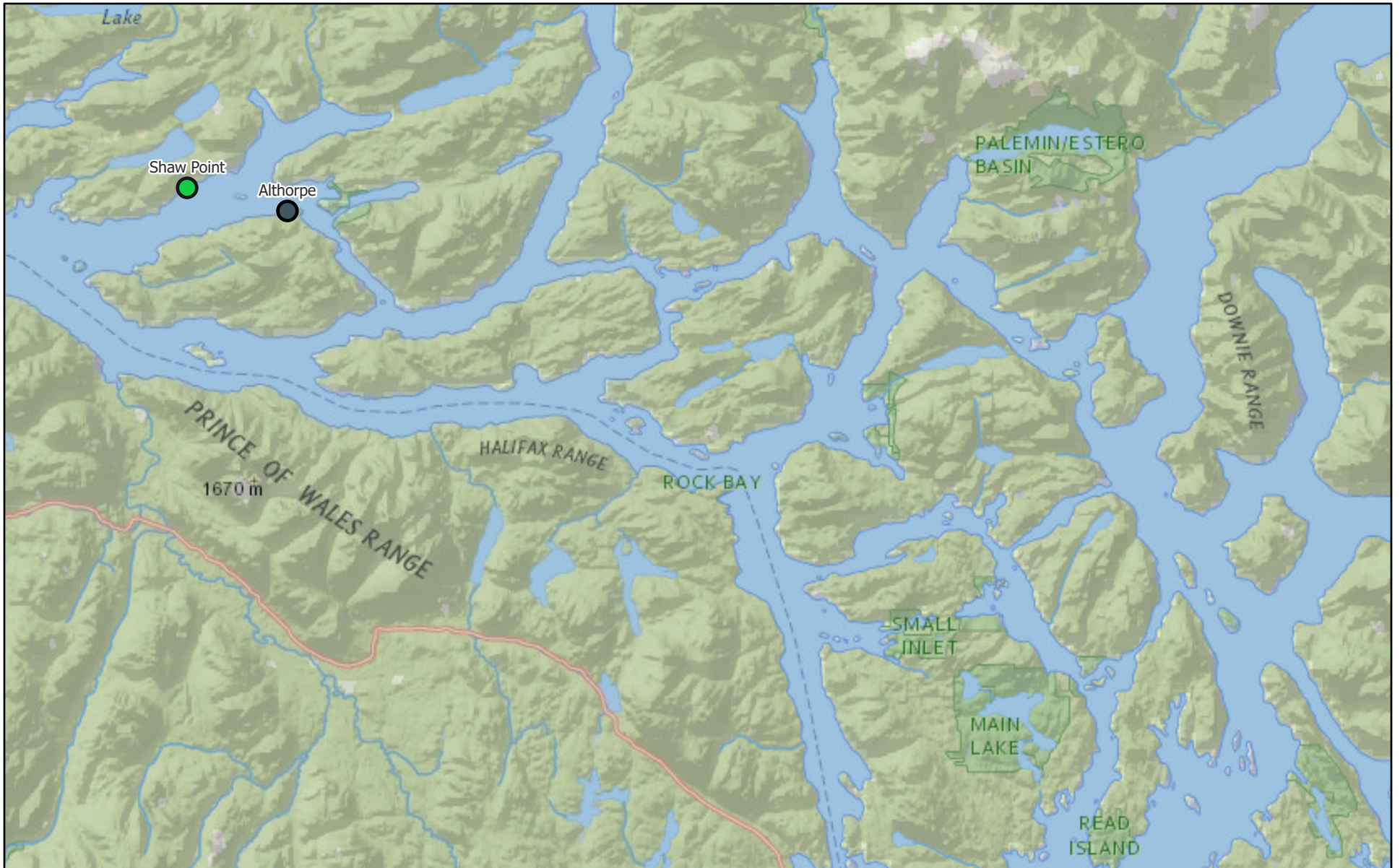


Monthly Sea Lice Monitoring July 2024 - Campbell River



8/6/2024

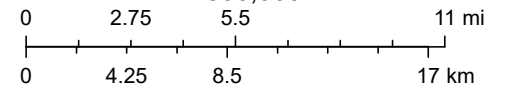
Monthly Sealice External

● ≤ 3.0 motile per fish

● Empty Mowi Sites

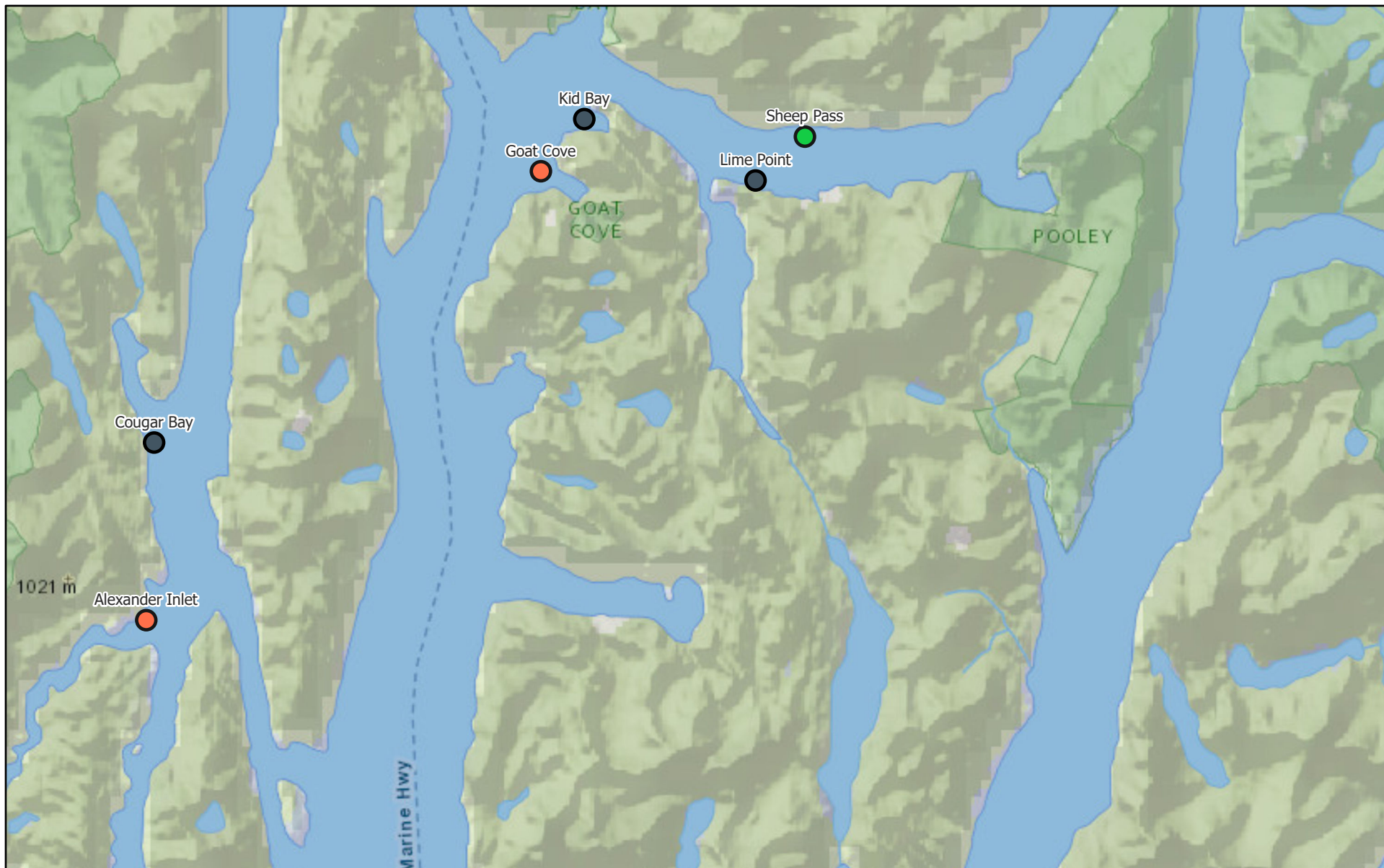
NatGeo_World_Map

1:500,000



National Geographic, Esri, Garmin, HERE, UNEP-WCMC, USGS, NASA, ESA, METI, NRCAN, GEBCO, NOAA, increment P Corp.

Monthly Sea Lice Monitoring July 2024 - Klemtu



8/6/2024

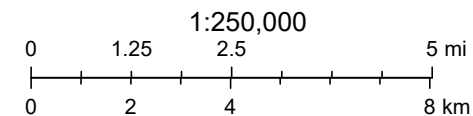
Monthly Sealice External

● ≤ 3.0 motile per fish

● > 3.0 motile per fish

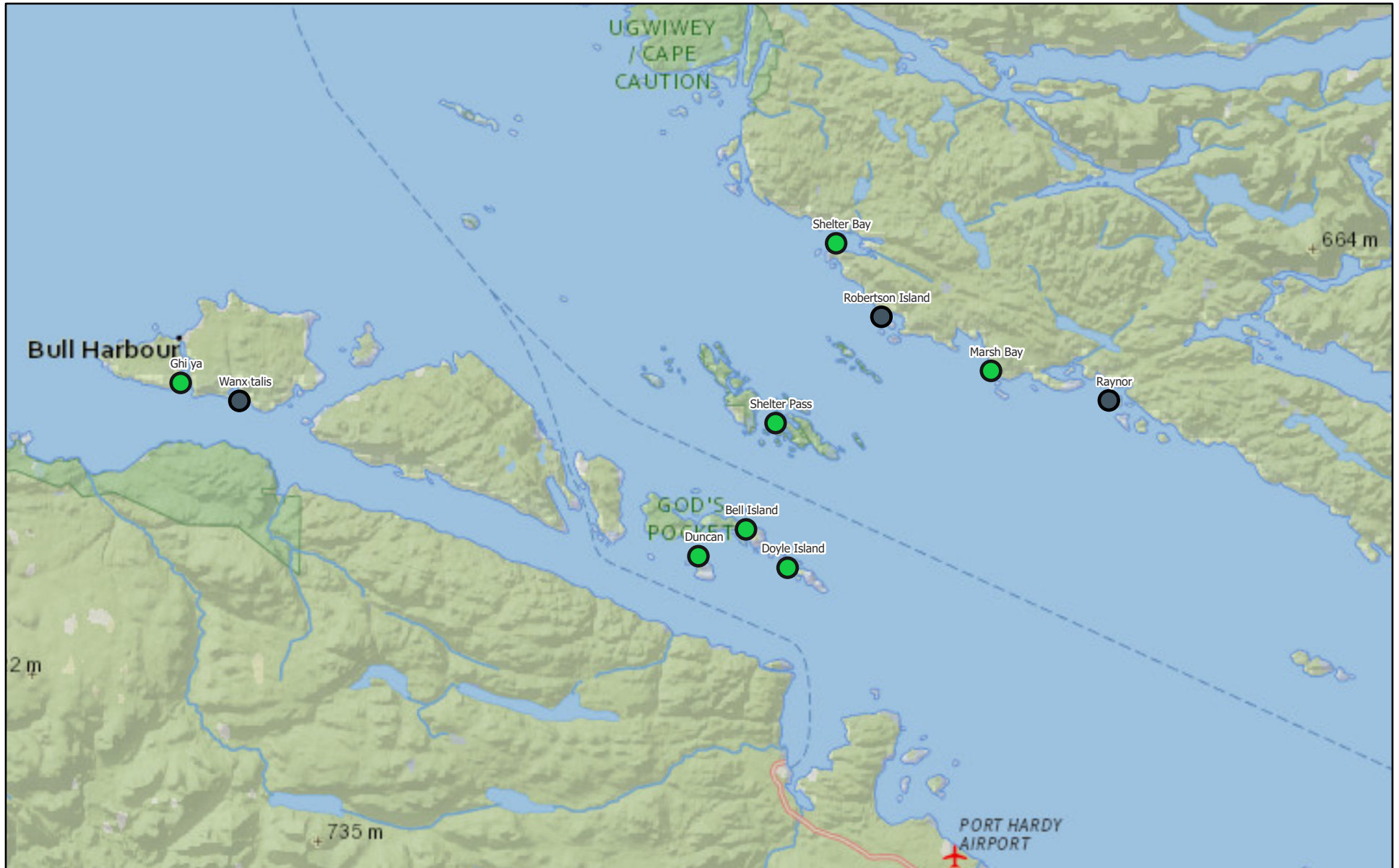
● Empty Mowi Sites

NatGeo_World_Map



National Geographic, Esri, Garmin, HERE, UNEP-WCMC, USGS, NASA, ESA, METI, NRCAN, GEBCO, NOAA, increment P Corp.

Monthly Sea Lice Monitoring July 2024 - Port Hardy



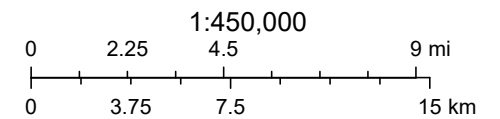
8/6/2024

Monthly Sealice External

● <= 3.0 motile per fish

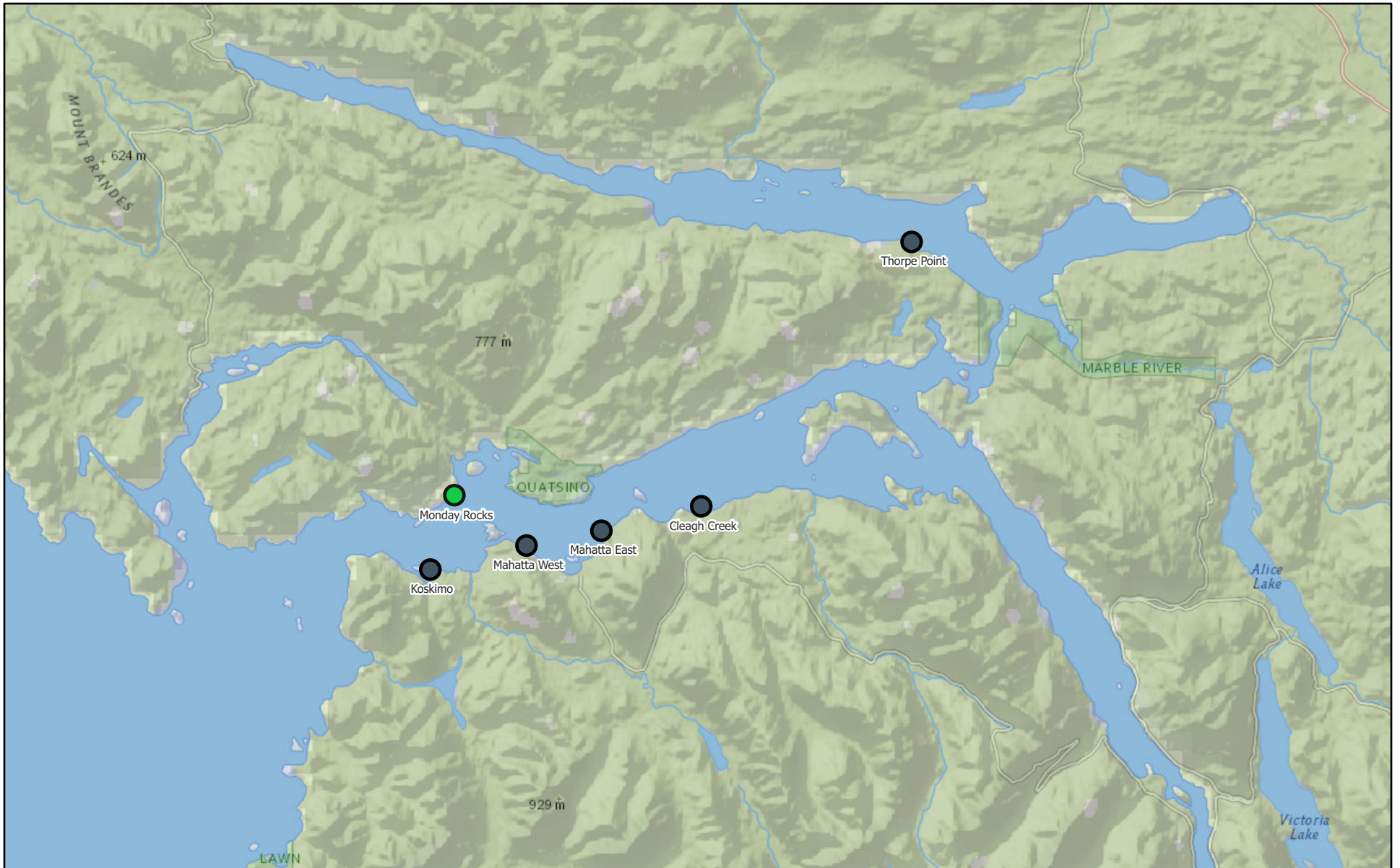
● Empty Mowi Sites

NatGeo_World_Map



National Geographic, Esri, Garmin, HERE, UNEP-WCMC, USGS, NASA, ESA, METI, NRCAN, GEBCO, NOAA, increment P Corp.

Monthly Sea Lice Monitoring July 2024 - Quatsino



8/6/2024

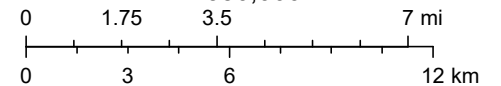
Monthly Sealice External

● ≤ 3.0 motile per fish

● Empty Mowi Sites

NatGeo_World_Map

1:350,000



National Geographic, Esri, Garmin, HERE, UNEP-WCMC, USGS, NASA, ESA, METI, NRCAN, GEBCO, NOAA, increment P Corp.

Area	Site	Month	Year	Avg Motile	Note	EMB Start	H2O2 Start	Mechanical delousing Start	Freshwater Start
Campbell River	Althorpe	7	2024						
Campbell River	Shaw Point	7	2024	1.2		21-Aug-23		9-Jan-24	13-Apr-24
Klemtu	Alexander Inlet	7	2024	3.86	Mechanical delousing completed			27-Jul-24	4-May-24
Klemtu	Cougar Bay	7	2024						
Klemtu	Goat Cove	7	2024	4.64	SLICE completed. 1 pen was mechanically deloused and the remaining pens are undergoing a FW treatment.	6-Jul-24		20-Jul-24	30-Jul-24
Klemtu	Kid Bay	7	2024		Fallow on July 4, 2024	22-Dec-23	6-Jan-23	29-Oct-23	28-Jul-23
Klemtu	Lime Point	7	2024						
Klemtu	Sheep Pass	7	2024	1.31	FW treatment planned for August				
Port Hardy	Bell Island	7	2024	0.34	Fish transferred to Doyle				
Port Hardy	Doyle Island	7	2024	1.64					
Port Hardy	Duncan	7	2024	2.86	FW treatment planned for August				29-Feb-24
Port Hardy	Ghi ya	7	2024	2.33	FW treatment planned for August				
Port Hardy	Marsh Bay	7	2024	0.48	Freshwater treatment completed . SLICE treatment completed.	19-Jul-24			26-Jun-24
Port Hardy	Raynor	7	2024						
Port Hardy	Robertson Island	7	2024						
Port Hardy	Shelter Bay	7	2024	0.49					
Port Hardy	Shelter Pass	7	2024	1.78	Mechanical delousing completed	3-Nov-23		4-Jul-24	6-Oct-23
Port Hardy	Wanx talis	7	2024						
Quatsino	Cleagh Creek	7	2024						
Quatsino	Koskimo	7	2024						
Quatsino	Mahatta East	7	2024						
Quatsino	Mahatta West	7	2024		Fallow on July 17, 2024	12-Jul-23			26-Mar-24
Quatsino	Monday Rocks	7	2024	1.95	Fallow on July 30, 2024	30-Jan-24			
Quatsino	Thorpe Point	7	2024						