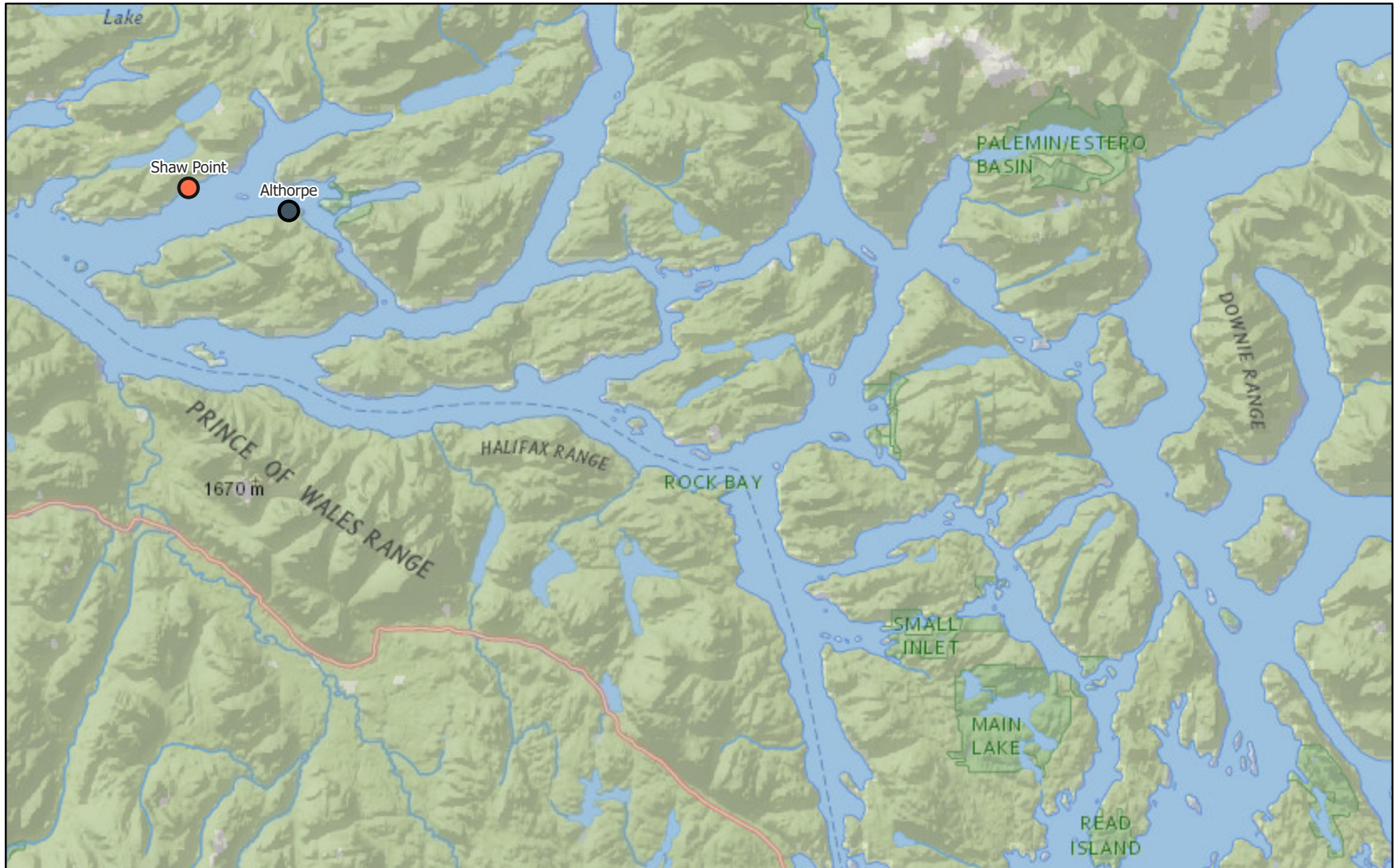


# Monthly Sea Lice Monitoring September 2024 - Campbell River



10/8/2024

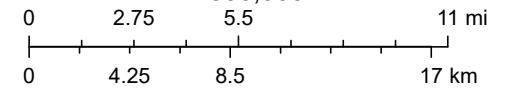
Monthly Sealice External

● > 3.0 motile per fish

● Empty Mowi Sites

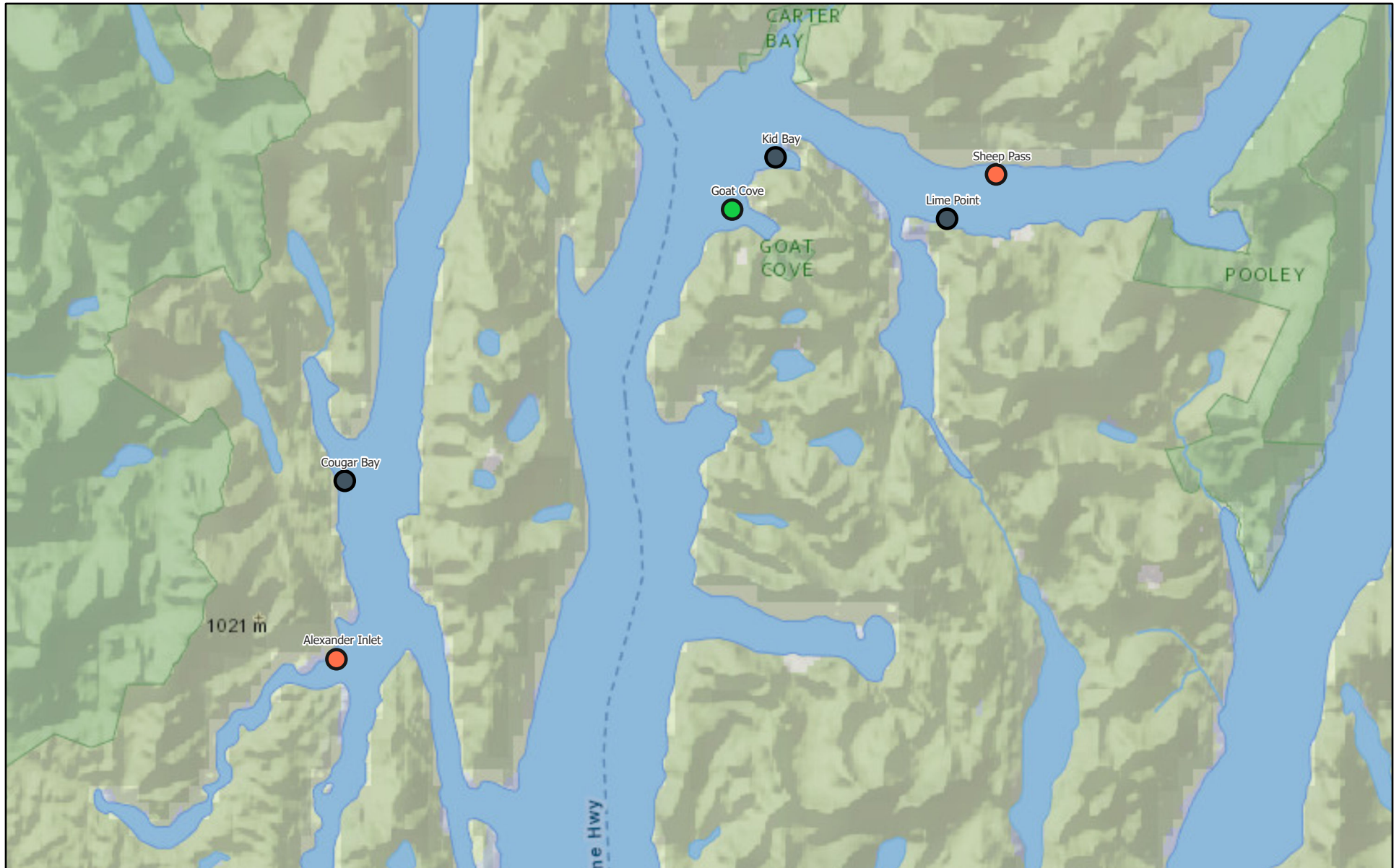
NatGeo\_World\_Map

1:500,000



National Geographic, Esri, Garmin, HERE, UNEP-WCMC, USGS, NASA, ESA, METI, NRCAN, GEBCO, NOAA, increment P Corp.

# Monthly Sea Lice Monitoring September 2024 - Klemtu



10/8/2024

Monthly Sealice External

● ≤ 3.0 motile per fish



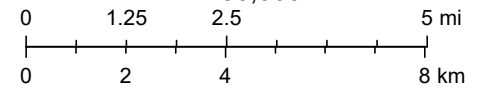
> 3.0 motile per fish



Empty Mowi Sites

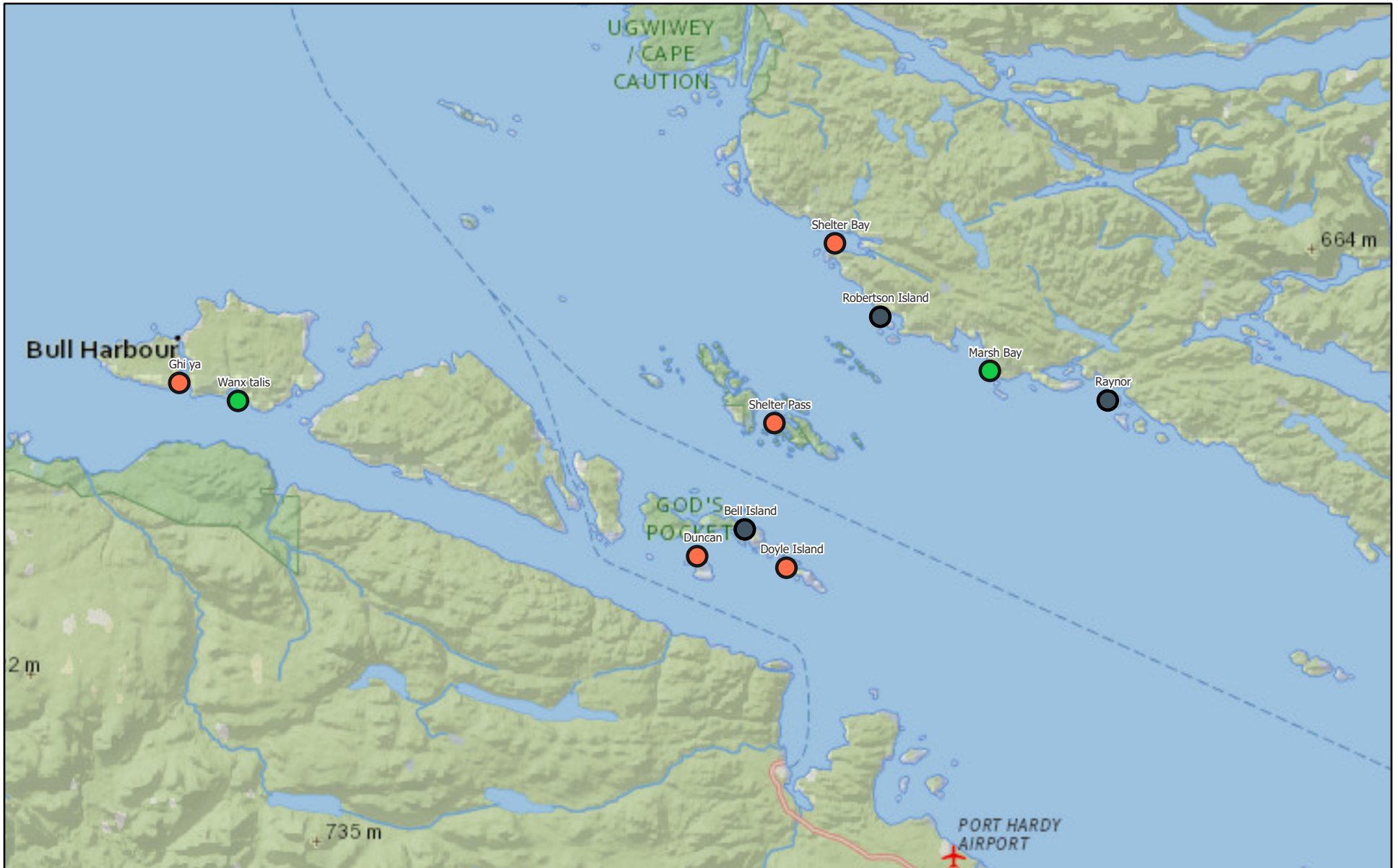
NatGeo\_World\_Map

1:250,000



National Geographic, Esri, Garmin, HERE, UNEP-WCMC, USGS, NASA, ESA, METI, NRCAN, GEBCO, NOAA, increment P Corp.

# Monthly Sea Lice Monitoring September 2024 - Port Hardy



10/8/2024

Monthly Sealice External

● ≤ 3.0 motile per fish

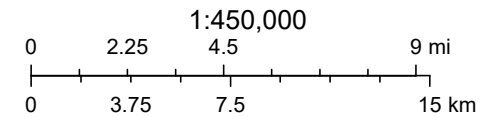


> 3.0 motile per fish



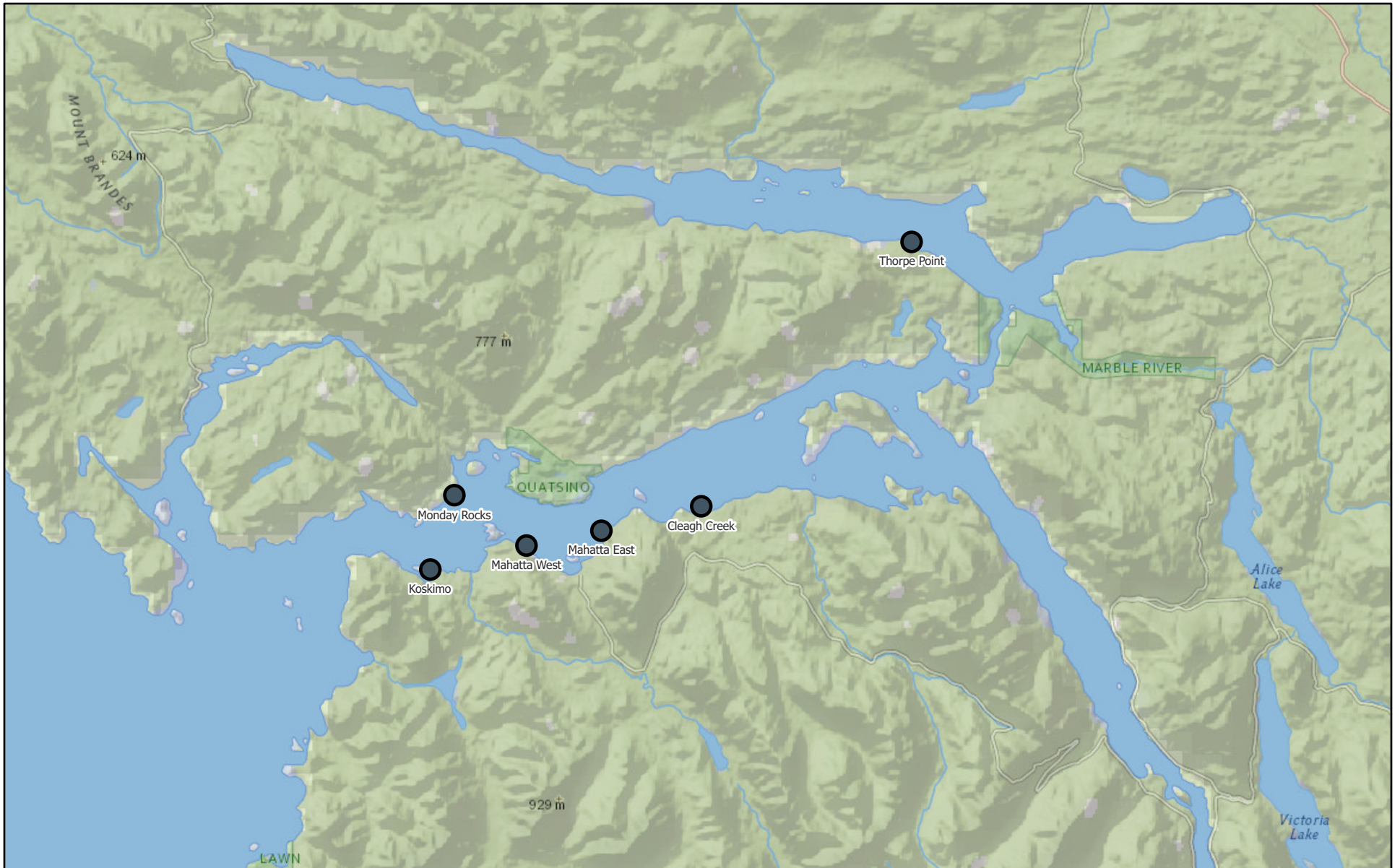
Empty Mowi Sites

NatGeo\_World\_Map



National Geographic, Esri, Garmin, HERE, UNEP-WCMC, USGS, NASA, ESA, METI, NRCAN, GEBCO, NOAA, increment P Corp.

# Monthly Sea Lice Monitoring September 2024 - Quatsino

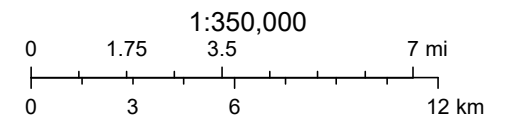


10/8/2024

Monthly Sealice External

NatGeo\_World\_Map

● Empty Mowi Sites



National Geographic, Esri, Garmin, HERE, UNEP-WCMC, USGS, NASA, ESA, METI, NRCAN, GEBCO, NOAA, increment P Corp.

Area	Site	Month	Year	Avg Motile	Note	EMB Start	H2O2 Start	Mechanical delousing Start	Freshwater Start
Campbell River	Althorpe	9	2024						
Campbell River	Shaw Point	9	2024	22.28	FW treatment to start in early October	21-Aug-23		9-Jan-24	13-Apr-24
Klemtu	Alexander Inlet	9	2024	8.87	SLICE treatment completed	12-Sep-24		27-Jul-24	4-May-24
Klemtu	Cougar Bay	9	2024						
Klemtu	Goat Cove	9	2024	2.48	harvesting and expected to be empty in early October	6-Jul-24		20-Jul-24	30-Jul-24
Klemtu	Kid Bay	9	2024						
Klemtu	Lime Point	9	2024						
Klemtu	Sheep Pass	9	2024	3.9	Hydrogen peroxide treatment planned for mid October				6-Aug-24
Port Hardy	Bell Island	9	2024						
Port Hardy	Doyle Island	9	2024	5.89	FW treatment completed. SLICE treatment ongoing	25-Sep-24			30-Aug-24
Port Hardy	Duncan	9	2024	4.39	SLICE treatment ongoing	28-Sep-24			15-Aug-24
Port Hardy	Ghi ya	9	2024	8.73	SLICE treatment completed.	8-Sep-24			
Port Hardy	Marsh Bay	9	2024	0.4		19-Jul-24			26-Jun-24
Port Hardy	Raynor	9	2024						
Port Hardy	Robertson Island	9	2024						
Port Hardy	Shelter Bay	9	2024	6.37	Transferred fish to Wanx talis. SLICE planned for early October				
Port Hardy	Shelter Pass	9	2024	6.87	Mechanical delousing completed. SLICE treatment completed	12-Sep-24		28-Aug-24	6-Oct-23
Port Hardy	Wanx talis	9	2024	0.16	Received fish from Shelter bay and treated with freshwater on route. SLICE treatment planned for October				15-Sep-24
Quatsino	Cleagh Creek	9	2024						
Quatsino	Koskimo	9	2024						
Quatsino	Mahatta East	9	2024						
Quatsino	Mahatta West	9	2024						
Quatsino	Monday Rocks	9	2024						
Quatsino	Thorpe Point	9	2024						