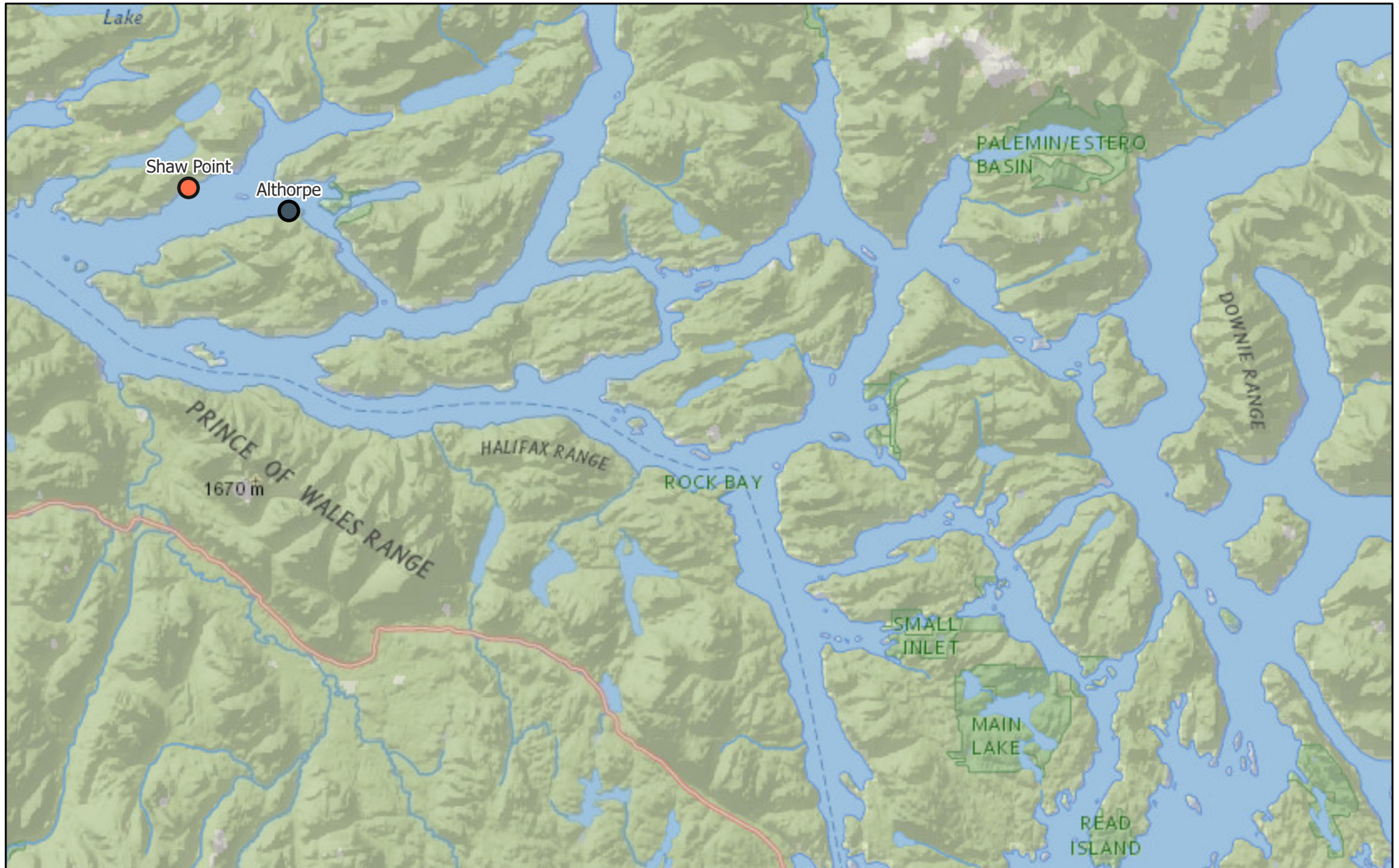


Monthly Sea Lice Monitoring October 2024 - Campbell River



11/6/2024

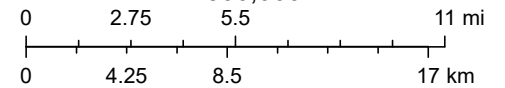
Monthly Sealice External

● > 3.0 motile per fish

● Empty Mowi Sites

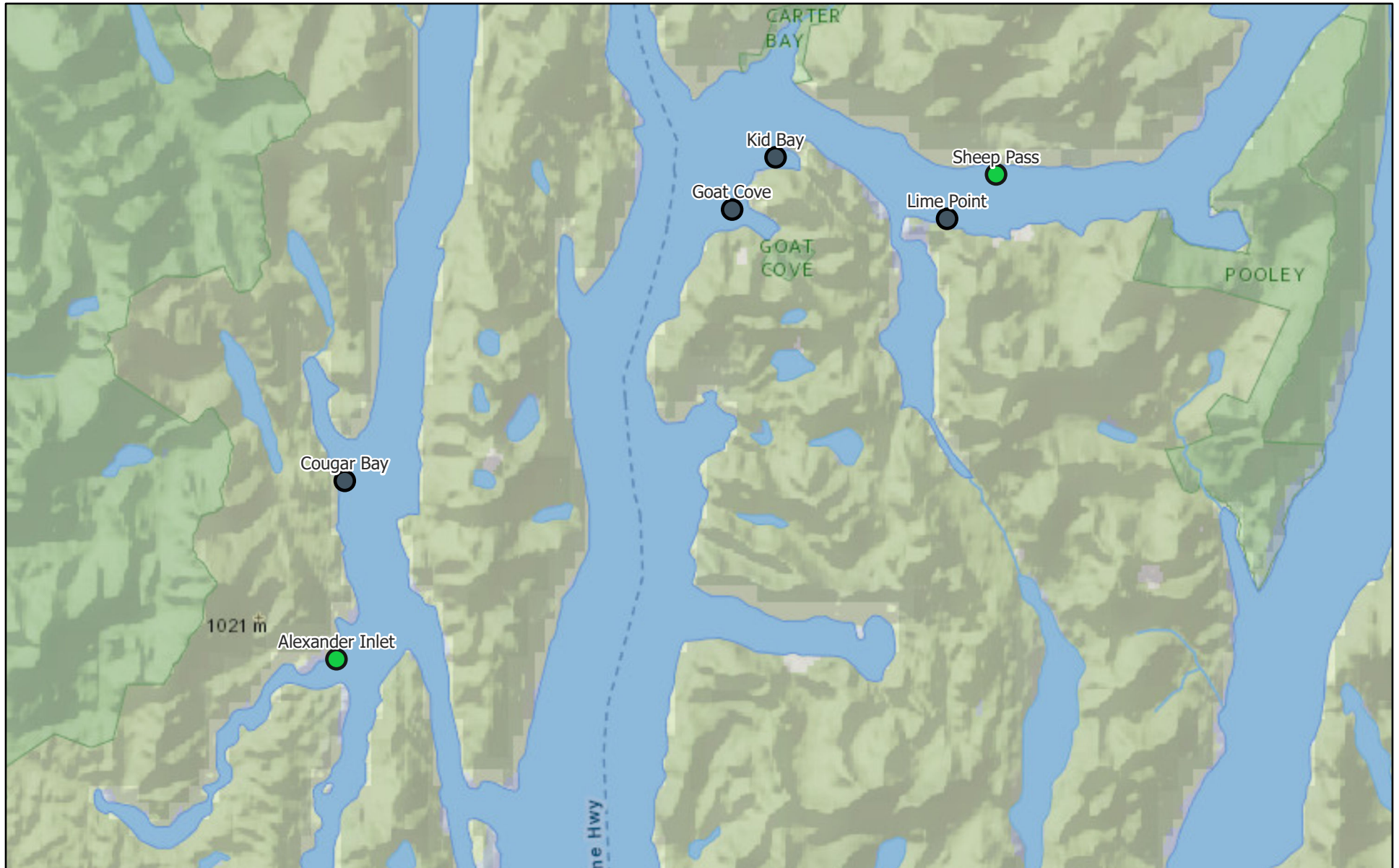
NatGeo_World_Map

1:500,000



National Geographic, Esri, Garmin, HERE, UNEP-WCMC, USGS, NASA, ESA, METI, NRCAN, GEBCO, NOAA, increment P Corp.

Monthly Sea Lice Monitoring October 2024 - Klemtu



11/6/2024

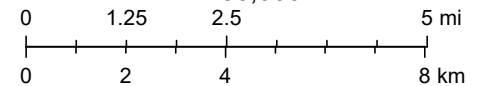
Monthly Sealice External

● ≤ 3.0 motile per fish

● Empty Mowi Sites

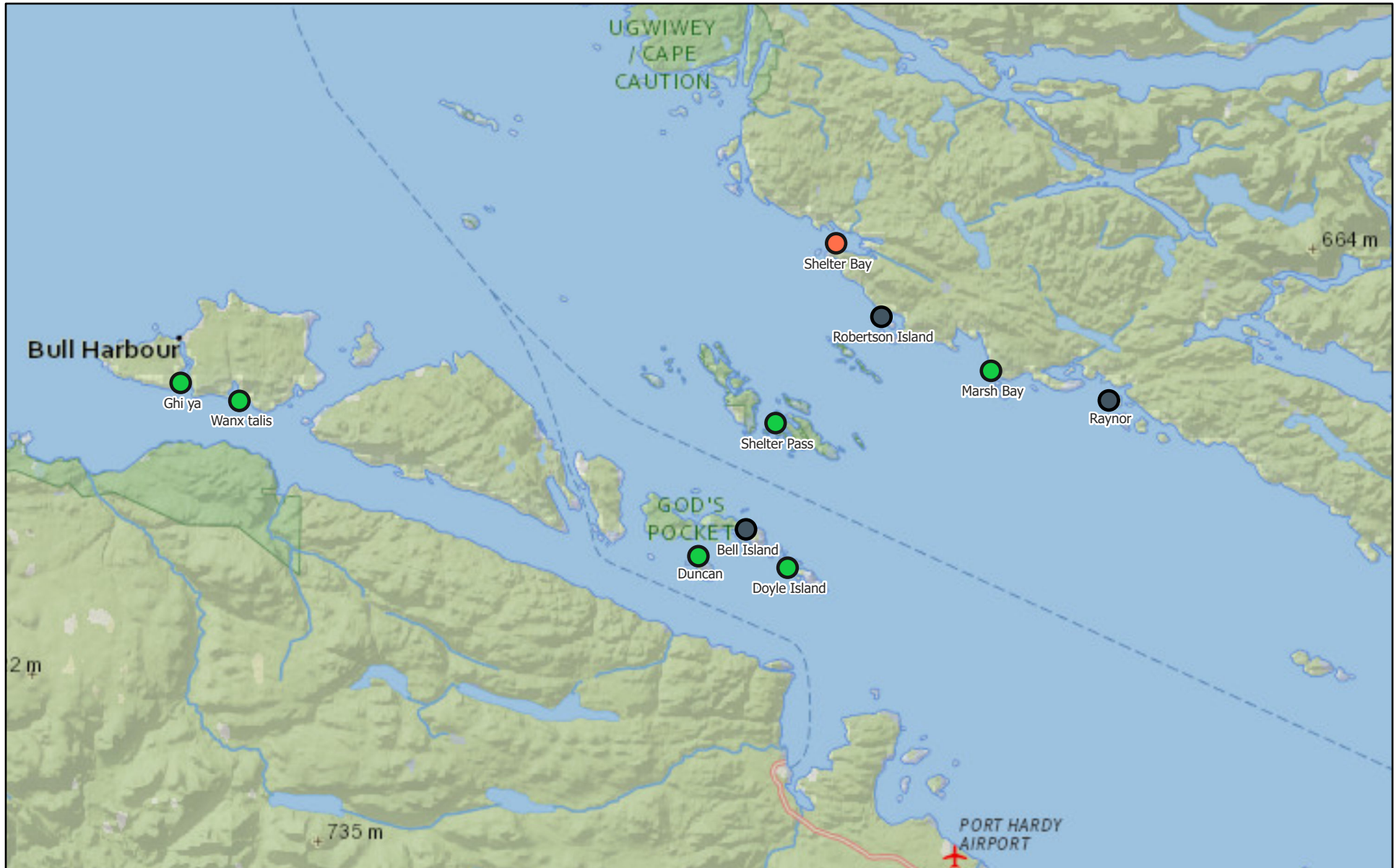
NatGeo_World_Map

1:250,000



National Geographic, Esri, Garmin, HERE, UNEP-WCMC, USGS, NASA, ESA, METI, NRCAN, GEBCO, NOAA, increment P Corp.

Monthly Sea Lice Monitoring October 2024 - Port Hardy



11/6/2024

Monthly Sealice External

● ≤ 3.0 motile per fish

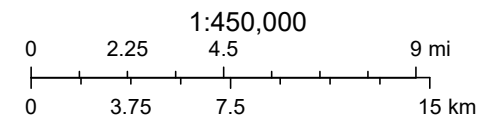


> 3.0 motile per fish



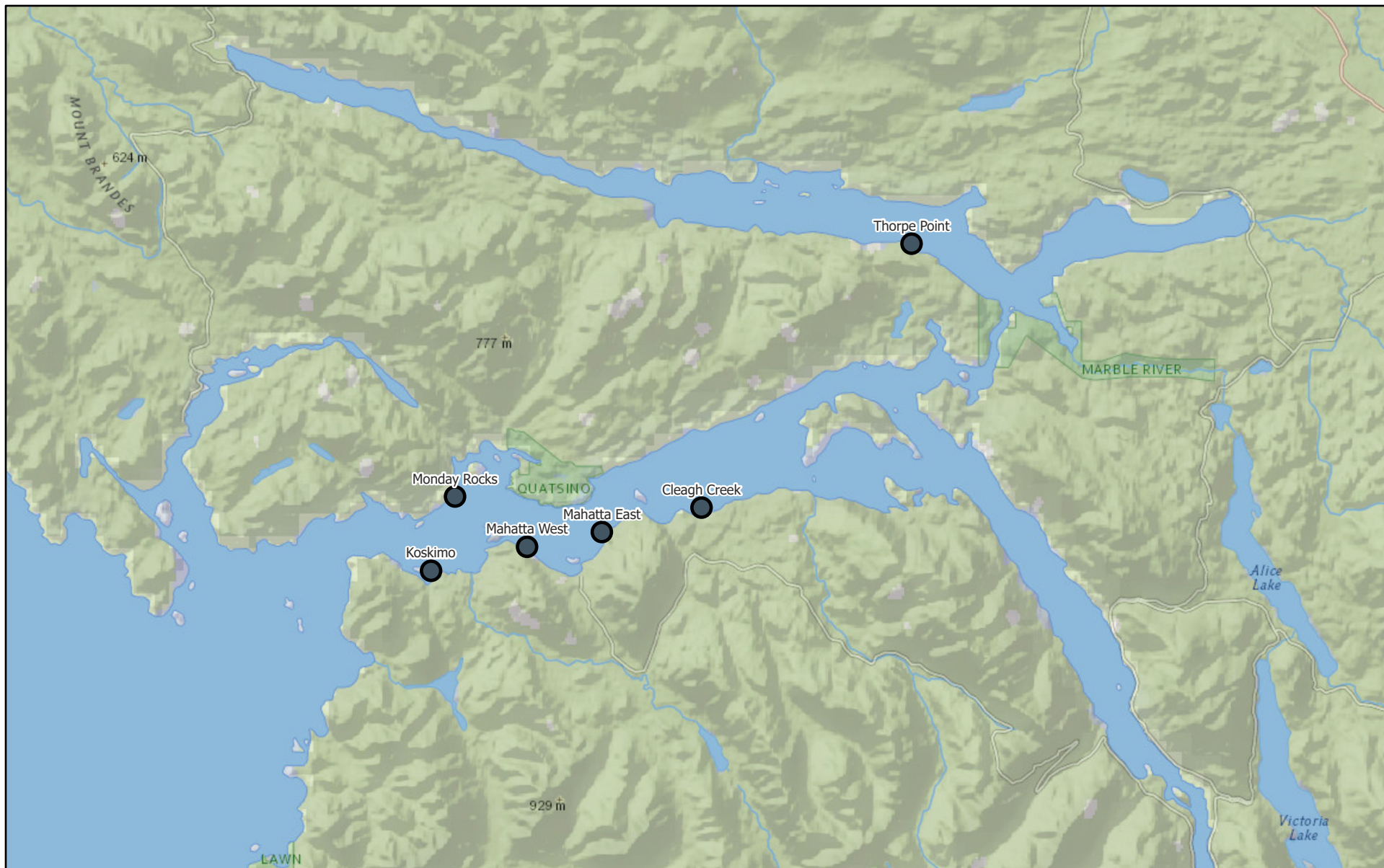
Empty Mowi Sites

NatGeo_World_Map



National Geographic, Esri, Garmin, HERE, UNEP-WCMC, USGS, NASA, ESA, METI, NRCAN, GEBCO, NOAA, increment P Corp.

Monthly Sea Lice Monitoring October 2024 - Quatsino

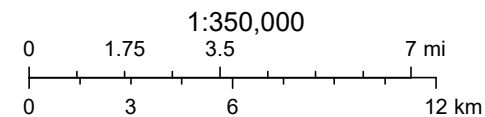


11/6/2024

Monthly Sealice External

NatGeo_World_Map

● Empty Mowi Sites



National Geographic, Esri, Garmin, HERE, UNEP-WCMC, USGS, NASA, ESA, METI, NRCAN, GEBCO, NOAA, increment P Corp.

Area	Site	Month	Year	Avg Motile	Note	EMB Start	H2O2 Start	Mechanical delousing Start	Freshwater Start
Campbell River	Althorpe	10	2024						
Campbell River	Shaw Point	10	2024	4.35	Freshwater and SLICE treatments completed	13-Oct-24		9-Jan-24	1-Oct-24
Klemtu	Alexander Inlet	10	2024	1.5		12-Sep-24		27-Jul-24	4-May-24
Klemtu	Cougar Bay	10	2024						
Klemtu	Goat Cove	10	2024		Site fallow on October 1, 2024	6-Jul-24		20-Jul-24	30-Jul-24
Klemtu	Kid Bay	10	2024						
Klemtu	Lime Point	10	2024						
Klemtu	Sheep Pass	10	2024	2.76	Hydrogen Peroxide treatment completed.		24-Oct-24		6-Aug-24
Port Hardy	Bell Island	10	2024						
Port Hardy	Doyle Island	10	2024	1.66	SLICE treatment completed.	25-Sep-24			30-Aug-24
Port Hardy	Duncan	10	2024	1.53	SLICE treatment completed.	28-Sep-24			15-Aug-24
Port Hardy	Ghi ya	10	2024	1.94	Shipped 2 pens to Wanx-talis	8-Sep-24			
Port Hardy	Marsh Bay	10	2024	0.41		19-Jul-24			26-Jun-24
Port Hardy	Raynor	10	2024						
Port Hardy	Robertson Island	10	2024						
Port Hardy	Shelter Bay	10	2024	5.86	SLICE treatment completed.	7-Oct-24			
Port Hardy	Shelter Pass	10	2024	1.82		12-Sep-24		28-Aug-24	6-Oct-23
Port Hardy	Wanx talis	10	2024	0.86	received 2 pens from Ghi-ya and treated with Freshwater on route. Site completed SLICE treatment.	17-Oct-24			8-Oct-24
Quatsino	Cleagh Creek	10	2024						
Quatsino	Koskimo	10	2024		Smolt entry starting October 8, 2024				
Quatsino	Mahatta East	10	2024						
Quatsino	Mahatta West	10	2024						
Quatsino	Monday Rocks	10	2024						
Quatsino	Thorpe Point	10	2024						