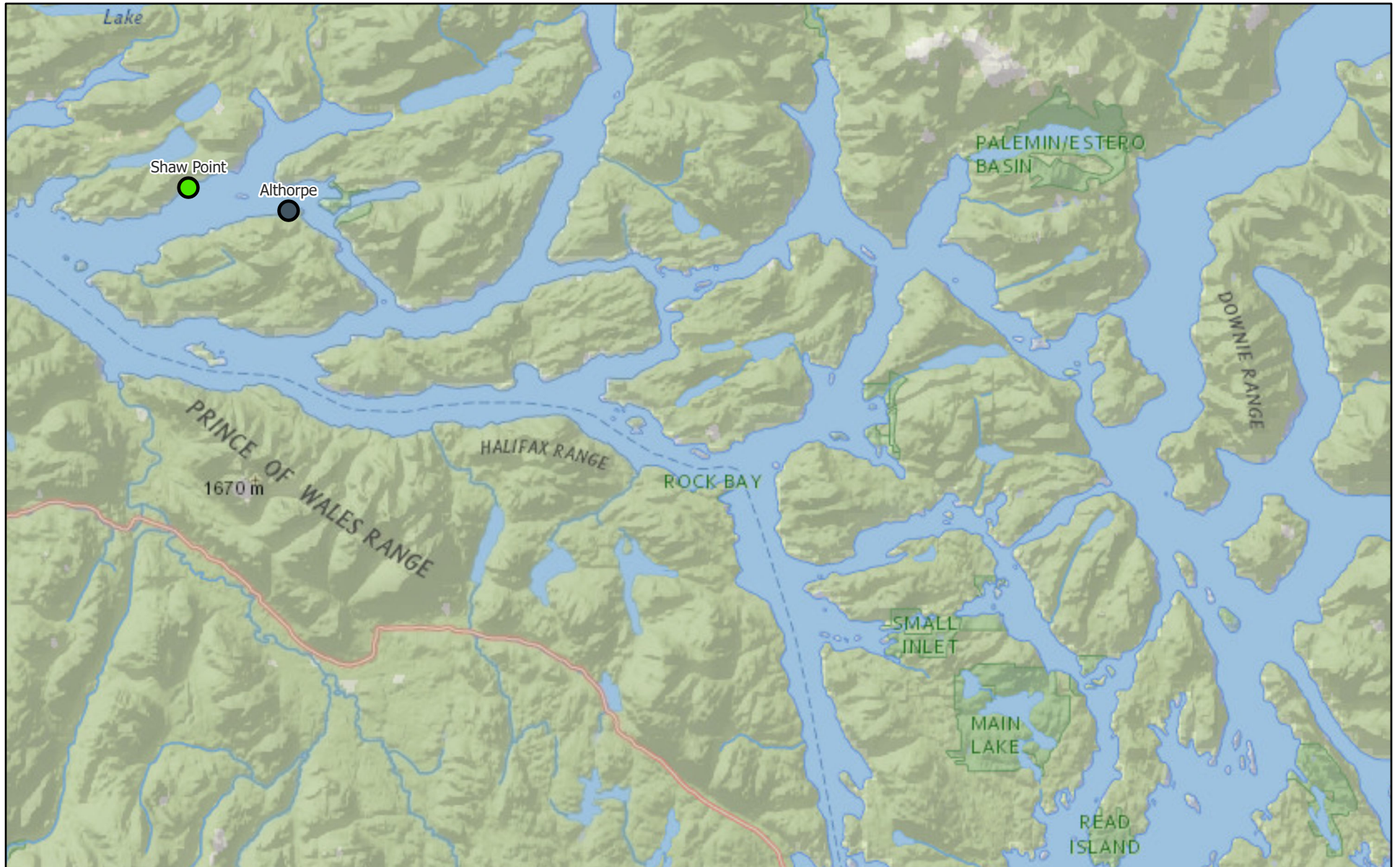


# Monthly Sea Lice Monitoring May 2025 - Campbell River



6/9/2025

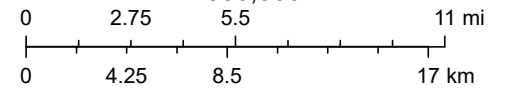
Monthly Sealice External (2.8 Threshold)

● ≤ 2.8 motile per fish

● Inactive

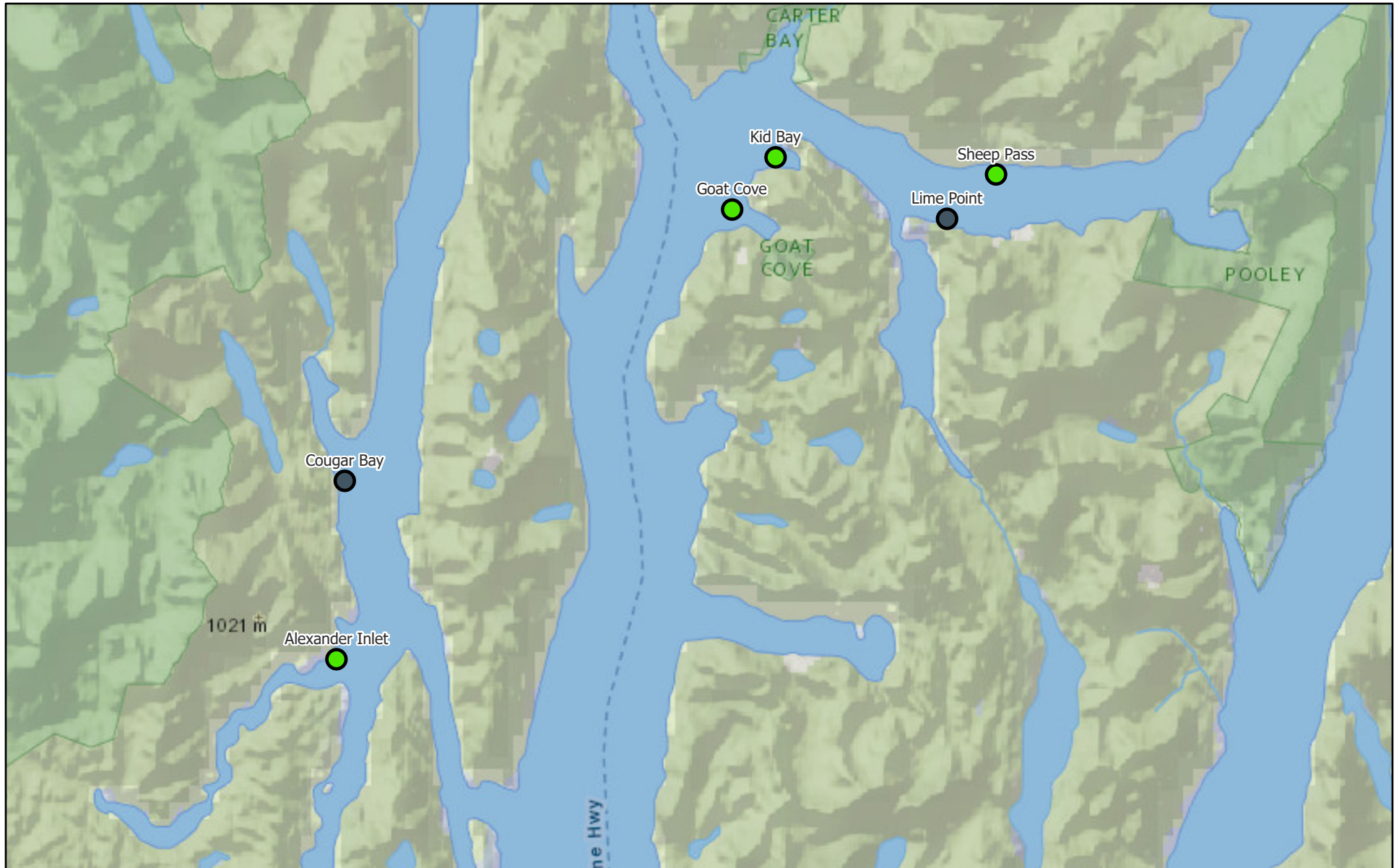
NatGeo\_World\_Map

1:500,000



National Geographic, Esri, Garmin, HERE, UNEP-WCMC, USGS, NASA, ESA, METI, NRCAN, GEBCO, NOAA, increment P Corp.

# Monthly Sea Lice Monitoring May 2025 - Klemtu



6/9/2025

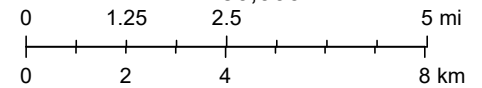
Monthly Sealice External (2.8 Threshold)

● ≤ 2.8 motile per fish

● Inactive

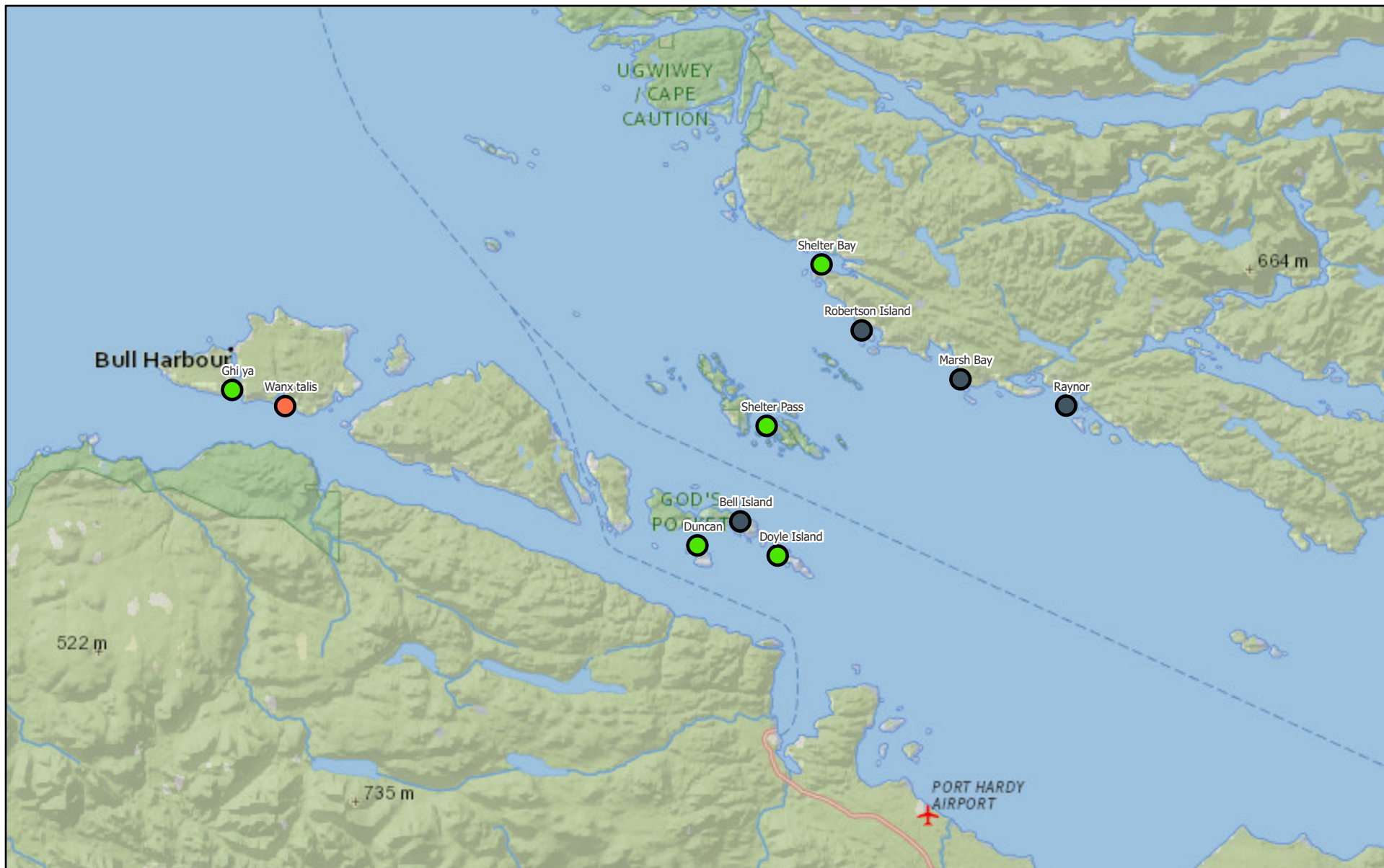
NatGeo\_World\_Map

1:250,000



National Geographic, Esri, Garmin, HERE, UNEP-WCMC, USGS, NASA, ESA, METI, NRCAN, GEBCO, NOAA, increment P Corp.

# Monthly Sea Lice Monitoring May 2025 - Port Hardy



6/9/2025

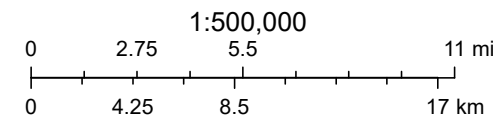
Monthly Sealice External (2.8 Threshold)

● ≤ 2.8 motile per fish

● > 2.8 motile per fish

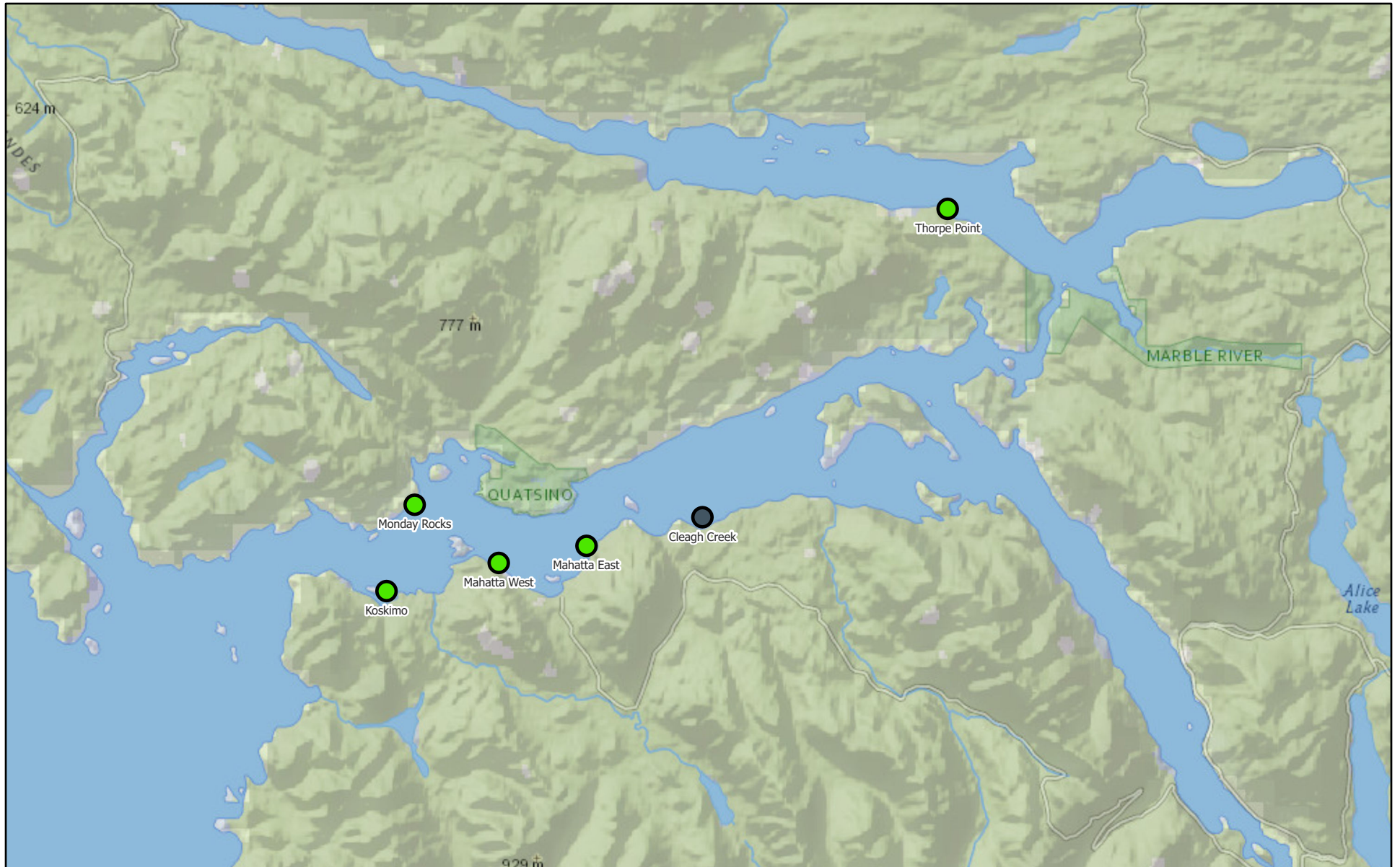
● Inactive

NatGeo\_World\_Map



National Geographic, Esri, Garmin, HERE, UNEP-WCMC, USGS, NASA, ESA, METI, NRCAN, GEBCO, NOAA, increment P Corp.

# Monthly Sea Lice Monitoring May 2025 - Quatsino



6/9/2025

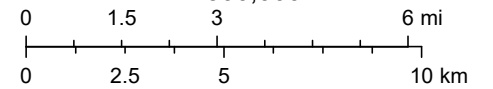
Monthly Sealice External (2.8 Threshold)

● ≤ 2.8 motile per fish

● Inactive

NatGeo\_World\_Map

1:300,000



National Geographic, Esri, Garmin, HERE, UNEP-WCMC, USGS, NASA, ESA, METI, NRCAN, GEBCO, NOAA, increment P Corp.

Area	Site	Month	Year	Avg Motile	Note	EMB Start	H202 Start	Mechanical delousing Start	Freshwater Start
Campbell River	Althorpe	5	2025						
Campbell River	Shaw Point	5	2025	1.51		14-Oct-24		9-Jan-24	1-Oct-24
Klemtu	Alexander Inlet	5	2025	0.46		12-Sep-24	26-Mar-25	27-Jul-24	4-May-24
Klemtu	Cougar Bay	5	2025						
Klemtu	Goat Cove	5	2025	0.07		6-Jul-24		20-Jul-24	30-Jul-24
Klemtu	Kid Bay	5	2025	0.39					12-Apr-25
Klemtu	Lime Point	5	2025						
Klemtu	Sheep Pass	5	2025	0.18			6-Apr-25		6-Aug-24
Port Hardy	Bell Island	5	2025						
Port Hardy	Doyle Island	5	2025	1.07	FW treatment completed	25-Sep-24			2-May-25
Port Hardy	Duncan	5	2025	1.04		18-Mar-25		20-Jan-25	28-Feb-25
Port Hardy	Ghi ya	5	2025	1.81		8-Sep-24			13-Feb-25
Port Hardy	Marsh Bay	5	2025						
Port Hardy	Raynor	5	2025						
Port Hardy	Robertson Island	5	2025						
Port Hardy	Shelter Bay	5	2025	1.4		7-Mar-25			
Port Hardy	Shelter Pass	5	2025	0					
Port Hardy	Wanx talis	5	2025	3.59	SLICE treatment completed. FW/Peroxide on select pens in early June	20-May-25		28-Feb-25	17-Feb-25
Quatsino	Cleagh Creek	5	2025						
Quatsino	Koskimo	5	2025	0.22					
Quatsino	Mahatta East	5	2025	0.03					
Quatsino	Mahatta West	5	2025	0.21					
Quatsino	Monday Rocks	5	2025	0.05					
Quatsino	Thorpe Point	5	2025	0.07					