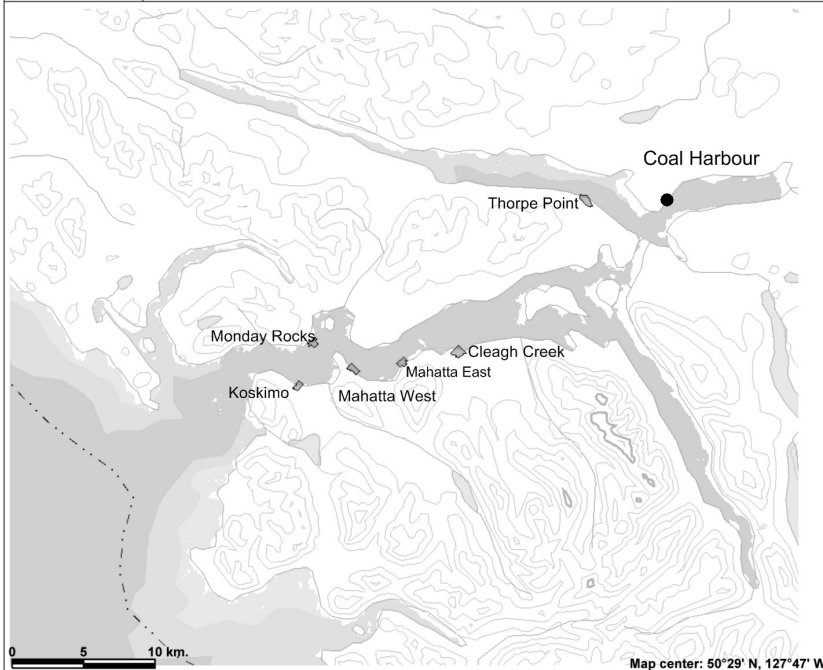


MOWI Canada West Quatsino Sound Farm Sites



Legend

- Marine Finfish Aquaculture Farms
- Contours (1:250K)**
- Contour - Index
- Contour - Intermediate
- Area of Indefinite Contours
- Provincial Boundary (1:250K)**
- Boundary (International)
- Boundary (Interprovincial)
- Bathymetry (1:250k)**
- Shallow (0-20m)
- Photic (20-50m)
- Mid-depth (50-200m)
- Deep (200-1000m)
- Abyssal (>1000m)



Scale: 1:289,722

This map is a user generated static output from an Internet mapping site and is for general reference only. Data layers that appear on this map may or may not be accurate, current, or otherwise reliable. THIS MAP IS NOT TO BE USED FOR NAVIGATION.



marineharvest

Thorpe Point

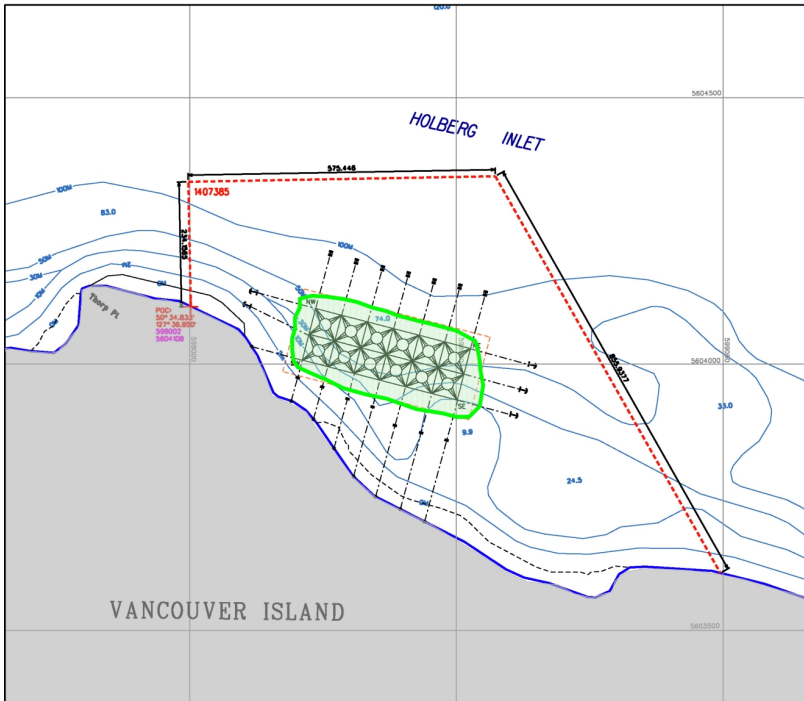
Site Reference Number: 1299

CONTAINMENT ARRAY MANAGEMENT PLAN

CURRENT AREA OF LEASE: 44.6 Ha

Legend

Farm Features	Water Features
Mooring Line	Shoreline
Mooring Block	0 Meter
Single	Bathymetry
Plow Anchor	Depth (Meter)
Shore Pin	Streams
Operational Pen	Salmonid Streams
70m circle	Rock
Non Operational Pen	Boundaries
70m circle	Proposed Lease Boundary
Proposed Pesticide Drift	Current Lease Boundary
	Intensive Use Area



POC:
50°34.833'
127°36.820'
588002
5604108

Cage Array Coordinates:	SW 50°34.783' - 127°36.771'
	NW 50°34.833' - 127°36.748'
	SE 50°34.739' - 127°36.528'
	NE 50°34.791' - 127°36.503'

THIS MAP HAS THE UTM GRID
USE THE BATHYMETRIC CHART FOR THE EXACT MAGNETIC DECLINATION
All Latitude and Longitude are Degree-Decimal Minutes
Anchor positions are approximate

Reference Map: 08L	UTM MADD
Base Map: 08L-052	20M
Bathymetry Base Chart: 0870	

Date: Feb. 8, 2011 Revised Date:

SCALE 1:5000

0 50 100 150 200 Meters

Prepared by: Summit Mapping Services
dsmith@sumit.net



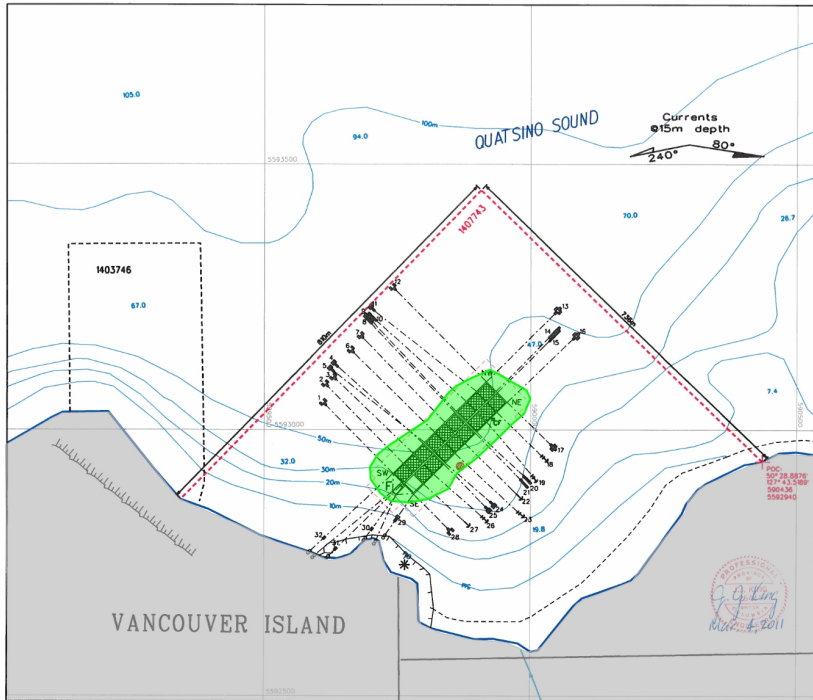
marineharvest

CLEAGH CREEK

Site Reference Number: 1378

CONTAINMENT ARRAY MANAGEMENT PLAN

CURRENT AREA OF LEASE: 46.8 Ha



Legend

Buildings	Water Features
Feed Shed	Shoreline
Compressor Float	0 Meter
Farm Features	Bathymetry
Mooring Line	Depth (Meter)
Mooring Block Single 5000kg	Streams
Mooring Block Triple 5000kg	Salmonid Streams
Mooring Blocks Four 2500kg	Rock
Mooring Block Single 1000kg	Boundaries
Mooring Block Single 2500kg	Proposed Lease Boundary
1/2" Double Shore Pin	Current Lease Boundary
Operational Pen 24m X 24m	Intensive Use Area
Non Operational Pen 24m X 24m	Environmental Labels
Proposed Pesticide Drift	Primary Current Direction
	Secondary Current Direction
Cage Array Coordinates:	SW 50°28.88' - 127°44.113'
	NW 50°28.975' - 127°43.955'
	SE 50°28.858' - 127°44.078'
	NE 50°28.954' - 127°43.901'

THIS MAP HAS THE UTM GRID
USE THE BATHYMETRIC CHART FOR THE
EXACT MAGNETIC DECLINATION
All Latitude and Longitude are Degree:Decimal Minutes
Anchor positions are approximate

PROFESSIONAL
G. G. King
Mar. 4, 2011

Reference Map: DEL
Base Map: DEL042
Chart: 0678

Date: March 4, 2011 Revised Date:

SCALE 1:5000

50 0 50 100 150 200
Meters

Prepared by: Summit Mapping Services
darr@dmsr.net

VANCOUVER ISLAND

1403746

67.0

105.0

94.0

100m

QUATSINO SOUND

Currents @15m depth

240° 80°

70.0

26.7

7.4

5593500

5593000

5592500

POC
50°28.88'N
127°43.50'W
5594.36
5592940

M. Al
30 JULY 2012



marineharvest

MAHATTA EAST

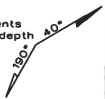
Site Reference Number: 1338

**CONTAINMENT ARRAY
MANAGEMENT PLAN**
CURRENT AREA OF LEASE: 31.6Ha

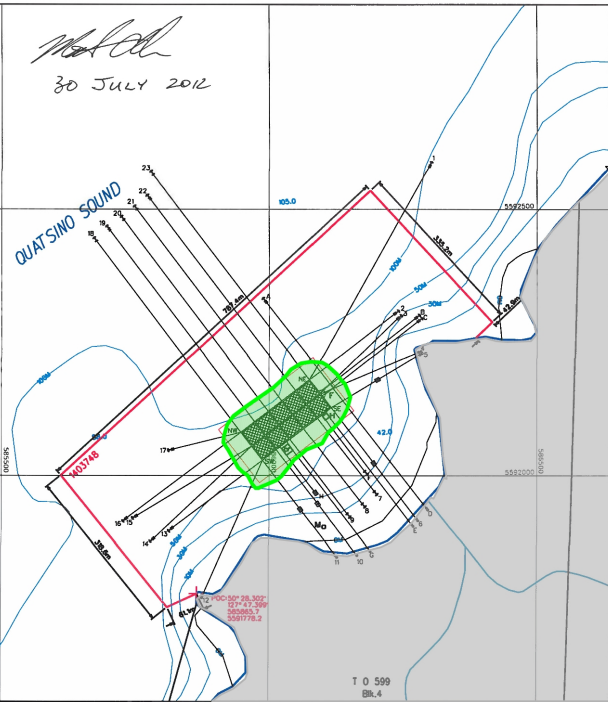
Legend

- | | |
|--------------------------------|--------------------------------|
| Buildings | Water Features |
| Feedshed | Shoreline |
| Mort Float | 0 Meter |
| House | Bathymetry |
| Compressor/
Utility Float | Depth (Meter) 1.7 |
| | Streams |
| Farm Features | Rock |
| Moorng Line | Boundaries |
| Moorng Block
Single 2000 Kg | Current Lease Boundary |
| Moorng Block
Single 2500 Kg | Intensive Use Area |
| Environmental Features | Proposed Pesticide Drift |
| Plow Anchor 700Kg | Current Meter Location Unknown |
| Plow Anchor 1000Kg | Primary Current Direction |
| Single Shore Pin | Secondary Current Direction |
| Double Shore Pin | |
| Non Operational Pen 30m square | |
| Operational Pen 30m square | |

Currents @15m depth 40°



QUAT SINO SOUND



12° 50' 28.30" S
127° 47' 39" E
35984.7
359178.2

THIS MAP HAS THE UTM GRID
USE THE BATHYMETRIC CHART FOR THE
EXACT MAGNETIC DECLINATION
All Latitude and Longitude are Degree-Decimal Minutes
Anchor positions are approximate

Reference Map: SBL UTM MADDG
Base Map: SBL041 Zone 9
Bathymetry Base Chart: 0678

Date: July 26, 2012 Revised Date:

SCALE 1:5000
0 50 100 150 200 Meters
Prepared by: Summit Mapping Services
dcoch@sumit.com

T O 599
BLK.4



marineharvest

MAHATTA WEST

Site Reference Number: 1238

CONTAINMENT ARRAY MANAGEMENT PLAN

CURRENT AREA OF LEASE: 30.2Ha
PROPOSED AREA OF LEASE: 49.3Ha

Legend

Buildings	Water Features
Feedshed	Shoreline
Mort Float	0 Meter
House	Bathymetry
Compressor Float	Depth (Meter) 1.7
Fuel Float	Streams
Farm Features	Rock
Mooring Line	Boundaries
Mooring Block Single	Proposed Lease Boundary
Flow Anchor	Current Lease Boundary
Shore Pin	Intensive Use Area
Non Operational Pen 30m square	Environmental Features
Operational Pen 30m square	Current Meter Location
Proposed Pesticide Drift	Primary Current Direction
	Secondary Current Direction

Cage Array Coordinates:	SW 50°28.172' - 127°50.250
	NW 50°28.191' - 127°50.240
	SE 50°28.090' - 127°50.008
	WE 50°28.108' - 127°49.994

THIS MAP HAS THE UTM GRID
USE THE BATHYMETRIC CHART FOR THE EXACT MAGNETIC DECLINATION
All Latitude and Longitude are Degree-Decimal Minutes
Anchor positions are approximate

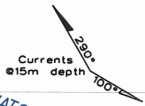
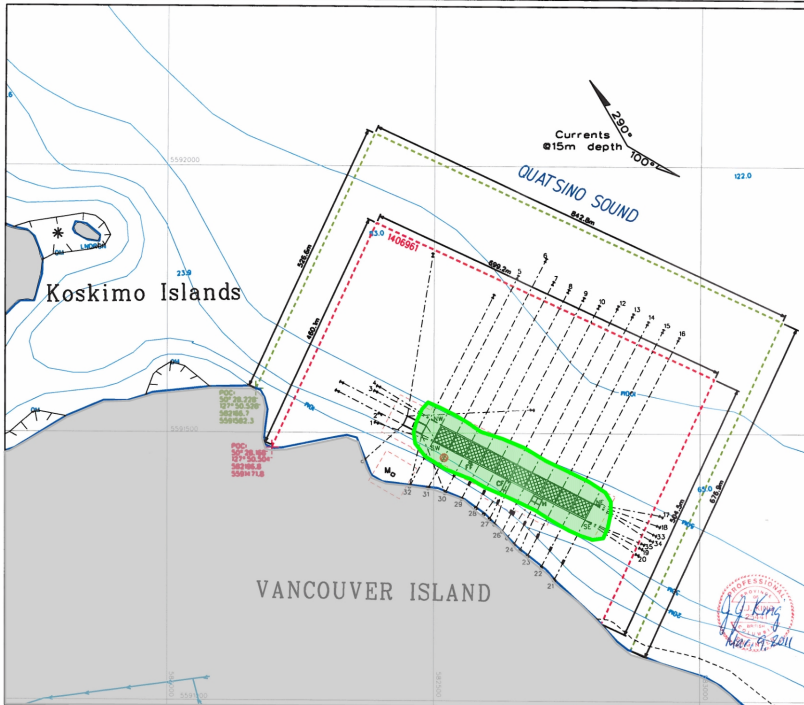
Reference Map: 02L UTM MADD8
Base Map: 02L041 Zone 8
Bathymetry Base Chart: 0670

Date: March 6, 2011 Revised Date:

SCALE 1:5000



Prepared by: Summit Mapping Services
darr@summit.net



PROFESSIONAL
D.J. King
Mar. 9, 2011



marineharvest

KOSKIMO BAY

Site Reference Number: 144

CONTAINMENT ARRAY MANAGEMENT PLAN

CURRENT AREA OF LEASE: 25.7Ha
PROPOSED AREA OF LEASE: 39.9 Ha

Legend

Buildings		Water Features
Feedhead		Shoreline
Mort Float		0 Meter
Compressor		Bathymetry
Plant		Depth (Meter) 1.7
Farm Features		Streams
Moorling Line		Rocks
Moorling Block Single 1000kg		Boundaries
Moorling Block Double		Proposed Lease Boundary
Moorling Block Triple		Current Lease Boundary
Flow Anchor 700kg		Intensive Use Area
Plow Anchor 1000kg		Environmental Sensitive
1/4" Single Shore Pin		Current Water Location
Non Operational Pen 50m square		Primary Current Direction
Operational Pen 50m square		Secondary Current Direction
Proposed Pesticide Drift		Proposed Pesticide Drift

Cage Array Coordinates:	SW 50° 27.451' - 127° 53.488'
	NW 50° 27.562' - 127° 53.353'
	SE 50° 27.442' - 127° 53.442'
	NE 50° 27.563' - 127° 53.328'

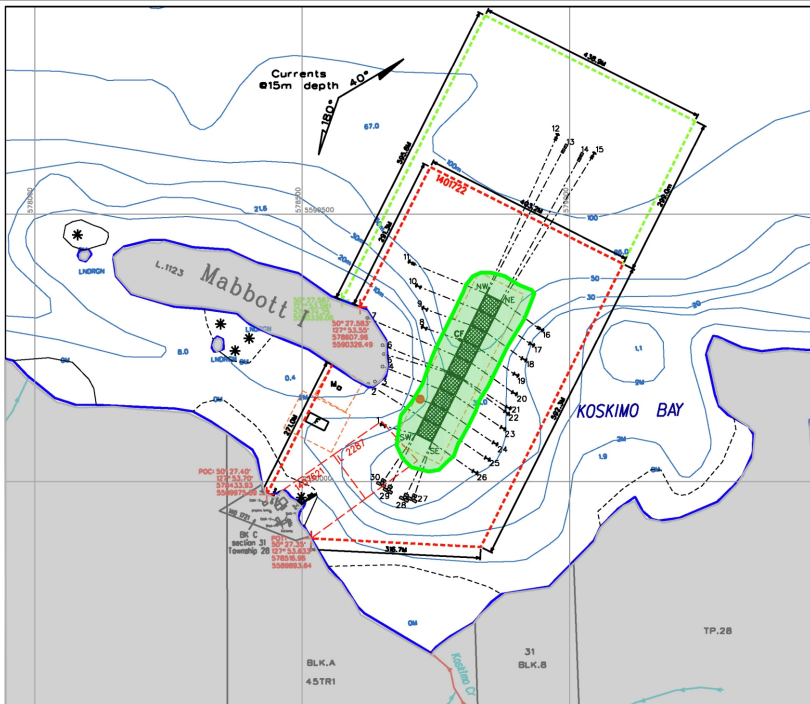
THIS MAP HAS THE UTM GRID
USE THE BATHYMETRIC CHART FOR THE EXACT MAGNETIC DECLINATION
 All Latitude and Longitude are Degree-Decimal Minutes
 Anchor positions are approximate

Reference Map: DEL
 Base Map DEL041 UTM HADDS Zone 8
 Bathymetry Base Chart 0070

Date: March 4, 2011 Revised Date:

SCALE 1:5000
 0 50 100 150 200
 Meters

Prepared by: Summit Mapping Services
 dms@summit.net





marineharvest

MONDAY ROCKS

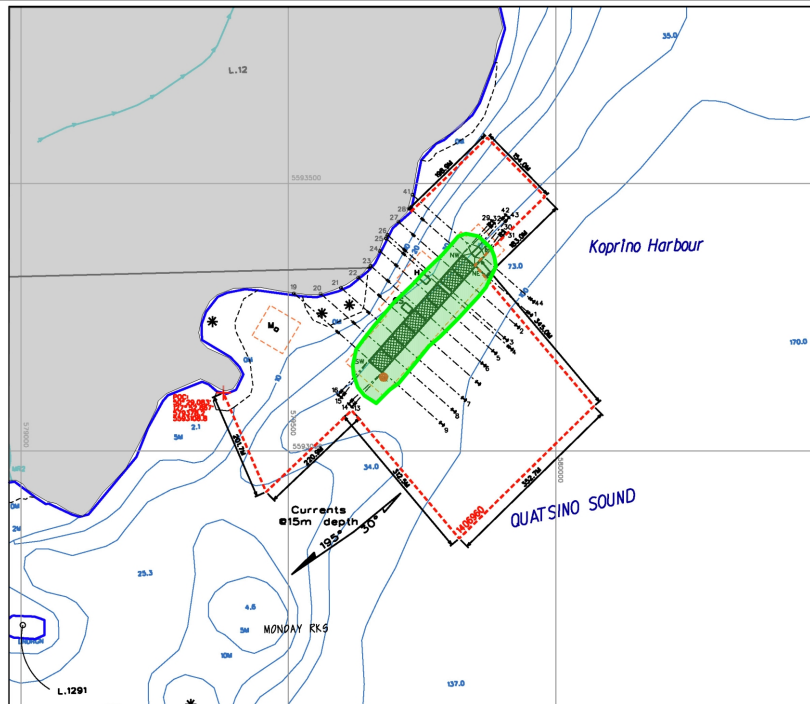
Site Reference Number: 1237

CONTAINMENT ARRAY MANAGEMENT PLAN

CURRENT AREA OF LEASE: 25.7Ha

Legend

Farm Features	Water Features
Mooring Line	Shoreline
Mooring Block Single	0 Meter
Plow Anchor	Bathymetry
Shore Pin	Depth (Meter)
Non Operational Pen 90m square	Streams
Operational Pen 90m square	Rock
Buildings	Boundaries
House 40' X 80'	Proposed Lease Boundary
Mort Float 20' X 20'	Current Lease Boundary
Feed Shed 20' X 30'	Current Intensive Use Area
Compressor Shed 40' X 80'	Environmental Features
Proposed Pesticide Drift	Current Water Location
	Primary Current Direction 2001
	Secondary Current Direction 2001



Cage Array Coordinates:	SW	50° 29.108' - 127° 52.638'
	NW	50° 29.214' - 127° 52.484'
	SE	50° 29.092' - 127° 52.614'
	NE	50° 29.200' - 127° 52.482'

THIS MAP HAS THE UTM GRID
 USE THE BATHYMETRIC CHART FOR THE EXACT MAGNETIC DECLINATION
 ALL Latitude and Longitude are Degree-Decimal Minutes
 Anchor positions are approximate

Reference Map: SBL UTM NAD83
 Base Map: SBL_041 SONE 9
 Bathymetry: Base Chart: 9079

Date: March 4, 2011 Revised Date:

SCALE 1:5000
 50 0 50 100 150 200
 Meters

Prepared by: Summit Mapping Services
 dsrb@summit.net